

VOR/DME BRW 116.2 Chan 109	APP CRS 220° M (042° G)	Rwy Idg 6500 TDZE 35 Apt Elev 44
--	---	---

VOR/DME RWY 24

BARROW/WILEY POST-WILL ROGERS MEMORIAL (BRW)(PABR)

Cat A circling NA north of Rwy 6-24.

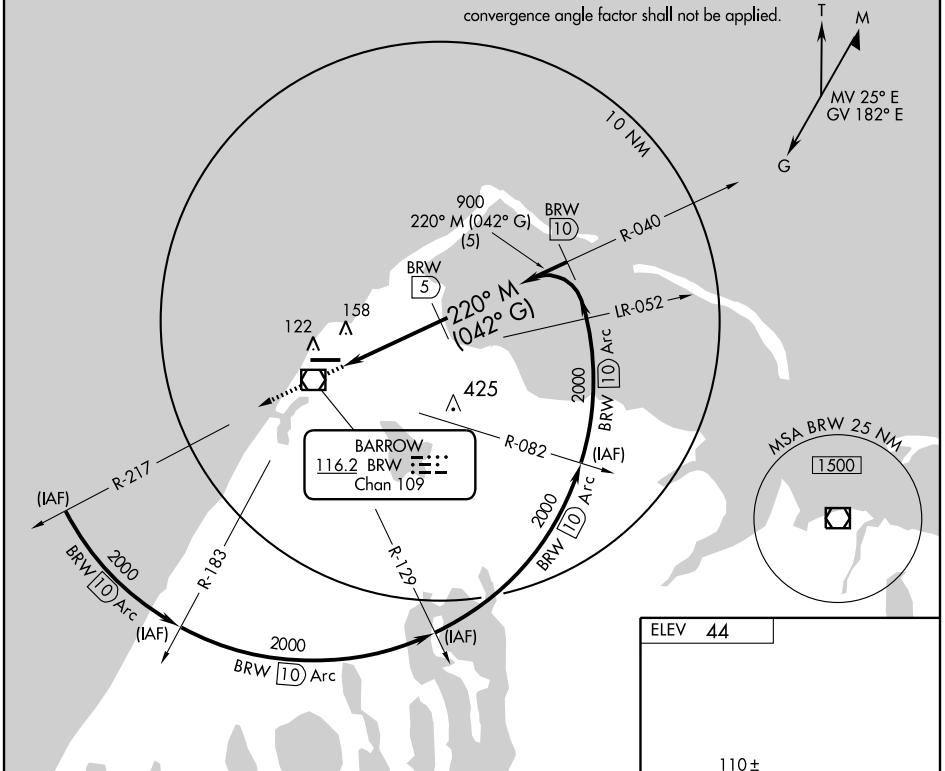
MISSED APPROACH: Climb to 2000 then direct BRW VOR/DME.

ASOS
132.15

ANCHORAGE CENTER
135.3 239.25

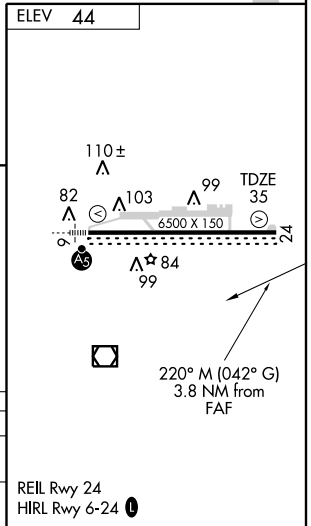
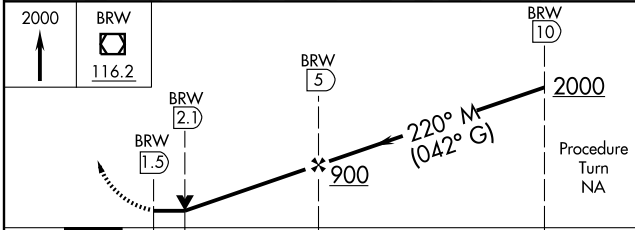
BARROW RADIO
123.6 (CTAF) 0

NOTICE: Grid courses are True Polar courses and convergence angle factor shall not be applied.



AK, 22 OCT 2009 to 17 DEC 2009

AK, 22 OCT 2009 to 17 DEC 2009



CATEGORY	A	B	C	D
S-24	420-1 385 (400-1)			420-1½ 385 (400-1½)
CIRCLING	420-1 376 (400-1)	500-1 456 (500-1)	500-1½ 456 (500-1½)	600-2 556 (600-2)

REIL Rwy 24
HIRL Rwy 6-24 0