

BARROW, ALASKA

AL-5463 (FAA)

VOR RWY 24

VOR/DME BRW	APP CRS	Rwy Idg	6500
116.2	220°M	TDZE	35
Chan 109	(042°G)	Apt Elev	44

BARROW/WILEY POST-WILL ROGERS MEMORIAL (BRW)(PABR)

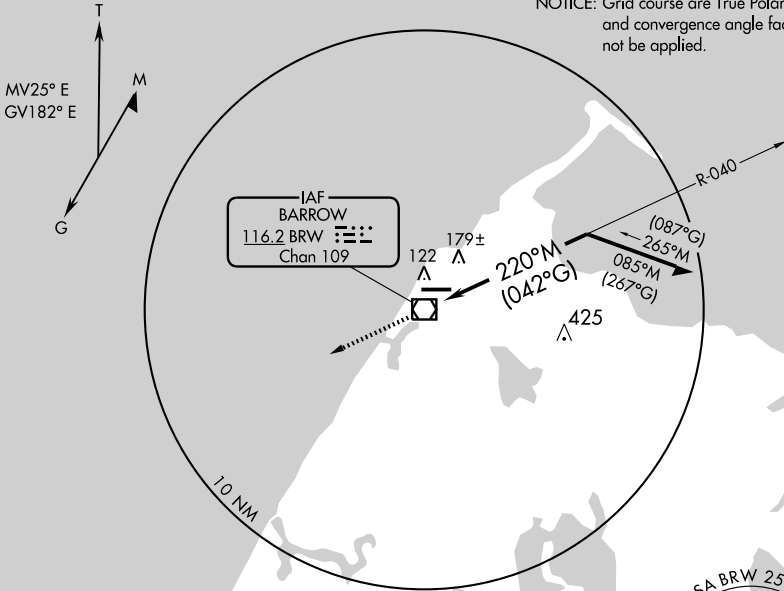
MISSED APPROACH: Climb to 2000 then direct BRW VOR/DME.

ASOS
132.15

ANCHORAGE CENTER
135.3 239.25

BARROW RADIO
123.6 (CTAF) 0

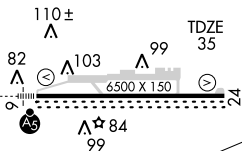
NOTICE: Grid course are True Polar courses and convergence angle factor shall not be applied.



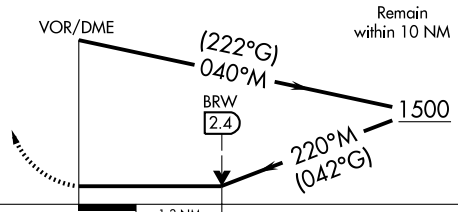
AK, 22 OCT 2009 to 17 DEC 2009

AK, 22 OCT 2009 to 17 DEC 2009

ELEV **44**



2000	BRW
↑	116.2



REIL Rwy 24
HIRL Rwy 6-24 0

CATEGORY	A	B	C	D
S-24	480-1	445 (500-1)	480-1¼ 445 (500-1¼)	480-1½ 445 (500-1½)
CIRCLING	480-1 436 (500-1)	500-1 456 (500-1)	500-1½ 456 (500-1½)	600-2 556 (600-2)

BARROW, ALASKA
Amdt 3B 09239

BARROW/WILEY POST-WILL ROGERS MEMORIAL (BRW)(PABR)
71°17'N-156°46'W

VOR RWY 24