

NDB RWY 6

NDB IEY 248	APP CRS 065° M (247° G)	Rwy Idg TDZE Apt Elev	6500 44 44
-----------------------	---	-----------------------------	---------------------------------------

BARROW/WILEY POST-WILL ROGERS MEMORIAL (BRW)(PABR)

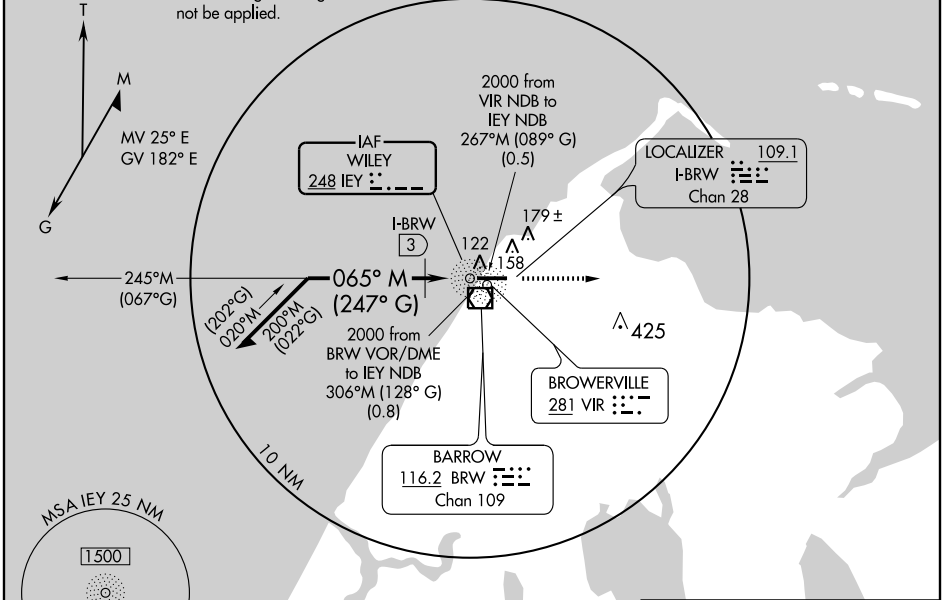
DME is collocated with I-BRW localizer.
Inoperative table does not apply to Non-DME S-6 Cat C.

MALSR

MISSED APPROACH: Climb to 2000 then direct VIR NDB.

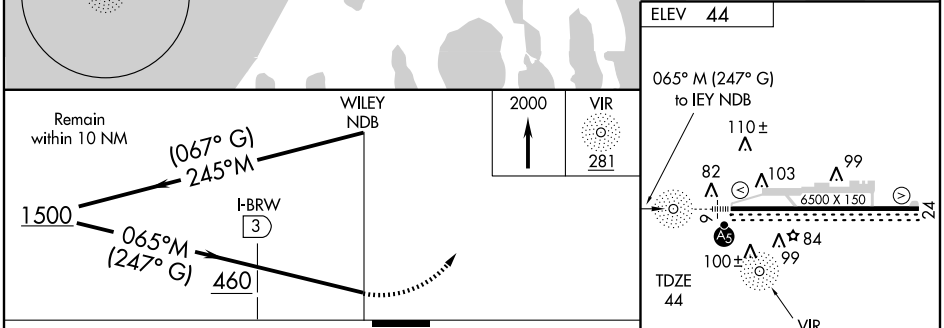
ASOS 132.15	ANCHORAGE CENTER 135.3 239.25	BARROW RADIO 123.6 (CTAF) 0
-----------------------	---	--

NOTICE: Grid courses are True Polar courses and convergence angle factor shall not be applied.



AK, 22 OCT 2009 to 17 DEC 2009

AK, 22 OCT 2009 to 17 DEC 2009



CATEGORY	A	B	C	D
S-6	460/40	416 (500-¾)	460/60	416 (500-1¼)
CIRCLING	460-1 416 (500-1)	500-1 456 (500-1)	500-1½ 456 (500-1½)	600-2 556 (600-2)
DME MINIMA				
S-6	400/40 356 (400-¾)			400/60 356 (400-1¼)

REIL Rwy 24
HIRL Rwy 6-24