

NDB RWY 24

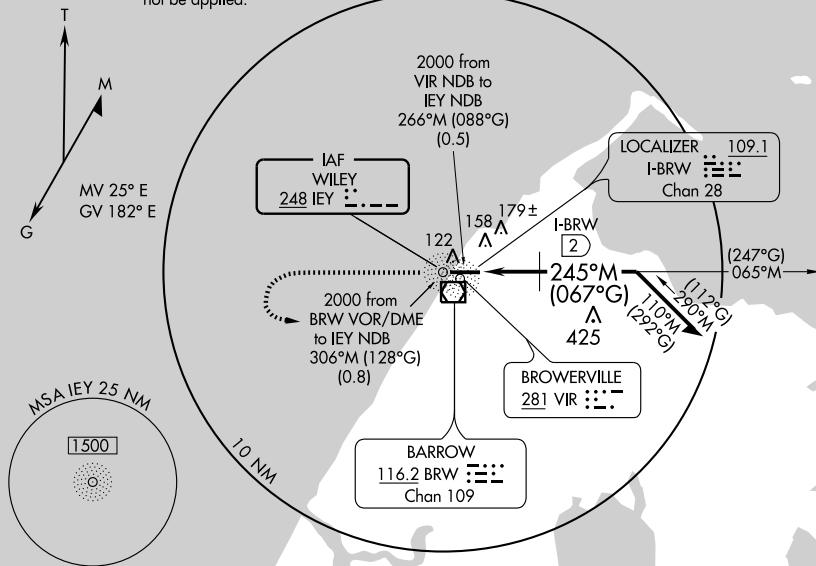
BARROW/WILEY POST-WILL ROGERS MEMORIAL (BRW)(PABR)

NDB IEY 248	APP CRS 245° M (067° G)	Rwy Idg 6500
	TDZE 35	Apt Elev 44

⚠ DME is collocated with I-BRW localizer. MISSED APPROACH: Climb to 2000 then left turn direct VIR NDB.

ASOS 132.15	ANCHORAGE CENTER 135.3 239.25	BARROW RADIO 123.6 (CTAF) 1
-----------------------	---	---------------------------------------

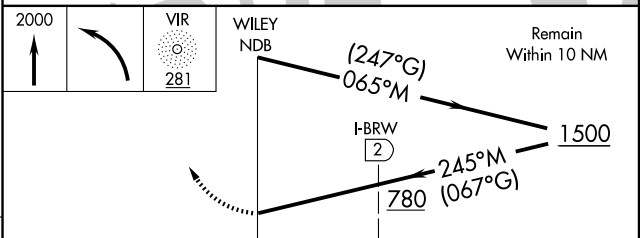
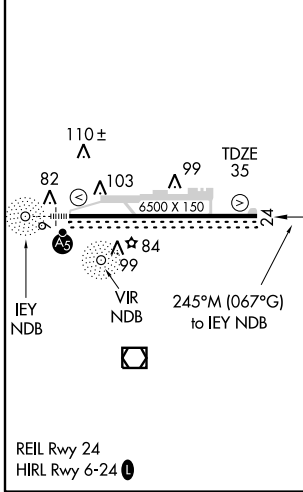
NOTICE: Grid courses are True, Polar courses and convergence angle factor shall not be applied.



AK, 22 OCT 2009 to 17 DEC 2009

AK, 22 OCT 2009 to 17 DEC 2009

ELEV 44



CATEGORY	A	B	C	D
S-24	780-1 745 (800-1)	780-1¼ 745 (800-1¼)	780-2¼ 745 (800-2¼)	780-2½ 745 (800-2½)
CIRCLING	780-1 736 (800-1)	780-1¼ 736 (800-1¼)	780-2¼ 736 (800-2¼)	780-2½ 736 (800-2½)
DME MINIMUMS				
S-24	480-1	445 (500-1)	480-1¼ 445 (500-1¼)	480-1½ 445 (500-1½)
CIRCLING	480-1 436 (500-1)	500-1 456 (500-1)	500-1½ 456 (500-1½)	600-2 556 (600-2)

NDB RWY 24