

BARROW, ALASKA

AL-5463 (FAA)

LOC/DME I-BRW	APP CRS	Rwy Idg	6500
109.1	065° M	TDZE	44
Chan 28	(247° G)	Apt Elev	44

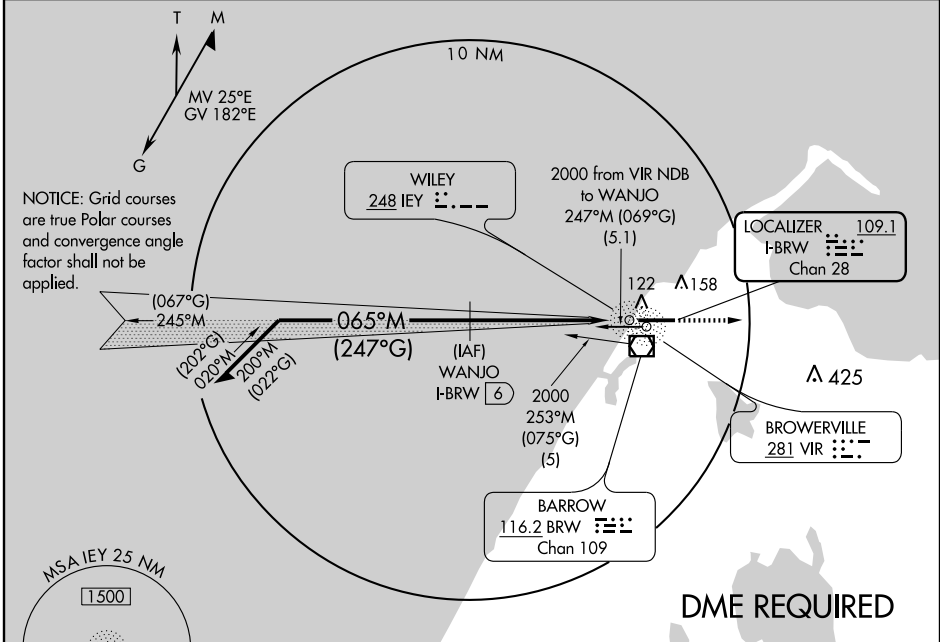
ILS or LOC/DME RWY 6

BARROW/WILEY POST-WILL ROGERS MEMORIAL (BRW)(P.A.B.R.)

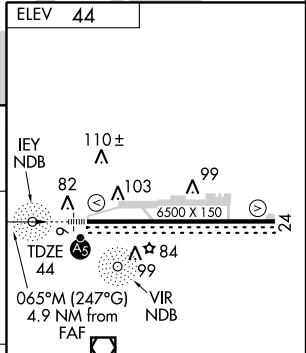
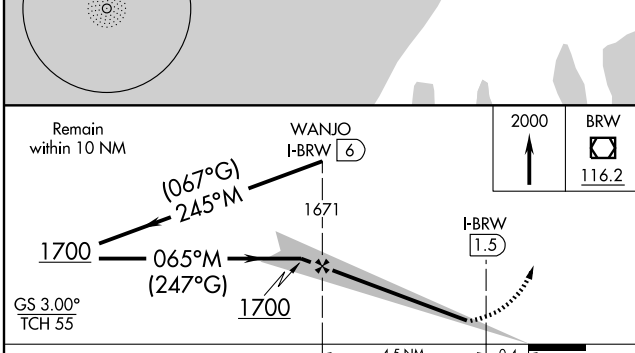
* RVR 1800 authorized with the use of FD or AP or HUD to DA.
Cat A circling NA north of Rwy 6-24

MALSR  MISSED APPROACH: Climb to 2000 then direct BRW VOR/DME.


ASOS 132.15	ANCHORAGE CENTER 135.3 239.25	BARROW RADIO 123.6 (CTAF)
-----------------------	---	-------------------------------------



DME REQUIRED



CATEGORY	A	B	C	D
S-ILS 6	*244/24 200 (200-½)			
S-LOC 6	320/24	276 (300-½)	320/40 276 (300-¾)	
CIRCLING	420-1 376 (400-1)	500-1 456 (500-1)	500-1½ 456 (500-1½)	600-2 556 (600-2)

REIL Rwy 24					
HIRL Rwy 6-24 					
FAF to MAP 4.5 NM					
Knots	60	90	120	150	180
Min:Sec	4:30	3:00	2:15	1:48	1:30

BARROW, ALASKA
Orig-B 09239

BARROW/WILEY POST-WILL ROGERS MEMORIAL (BRW)(P.A.B.R.)
71° 17' N-156° 46' W

ILS or LOC/DME RWY 6

AK, 22 OCT 2009 to 17 DEC 2009

AK, 22 OCT 2009 to 17 DEC 2009