

BARROW, ALASKA

AL-5463 (FAA)

# GPS RWY 24

BARROW/ WILEY POST-WILL ROGERS MEMORIAL (BRW)(PABR)

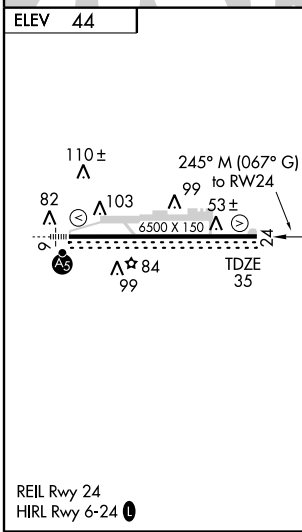
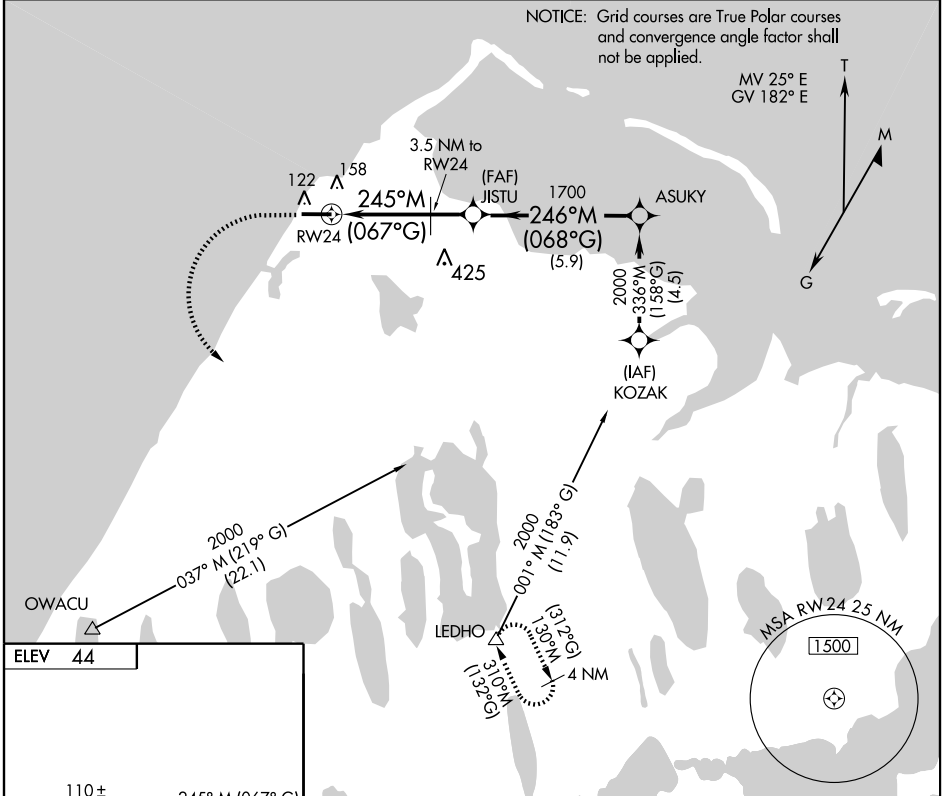
APP CRS	Rwy Idg	<b>6500</b>
<b>245° M</b>	TDZE	<b>35</b>
<b>(067° G)</b>	Apt Elev	<b>44</b>

<b>▲ NA</b>	Cat A circling NA north of Rwy 6-24.	MISSED APPROACH: Climb to 1000, then climbing left turn to 2000 direct LEDHO and hold.
-------------	--------------------------------------	--

ASOS <b>132.15</b>	ANCHORAGE CENTER <b>135.3 239.25</b>	BARROW RADIO <b>123.6 (CTAF) 0</b>
-----------------------	---	---------------------------------------

NOTICE: Grid courses are True Polar courses and convergence angle factor shall not be applied.

MV 25° E  
GV 182° E



	1000	2000	LEDHO	ASUKY
	↑	↻	▲	
	3.5 NM to RW24		JISTU	ASUKY
	RW24		1700	2000
	3.04° TCH 50		(067°G)	(068°G)
	1200		1700	2000
	3.5 NM	1.6 NM	5.9 NM	
CATEGORY	A	B	C	D
S-24	360-1 325 (400-1)			
CIRCLING	420-1 376 (400-1)	500-1 456 (500-1)	540-1½ 496 (500-1½)	600-2 556 (600-2)

BARROW, ALASKA  
Orig-B 09239

BARROW/ WILEY POST-WILL ROGERS MEMORIAL (BRW)(PABR)  
71°17'N-156°46'W

# GPS RWY 24

AK, 22 OCT 2009 to 17 DEC 2009

AK, 22 OCT 2009 to 17 DEC 2009