

RED HOOK, NEW YORK

AL-5462 (FAA)

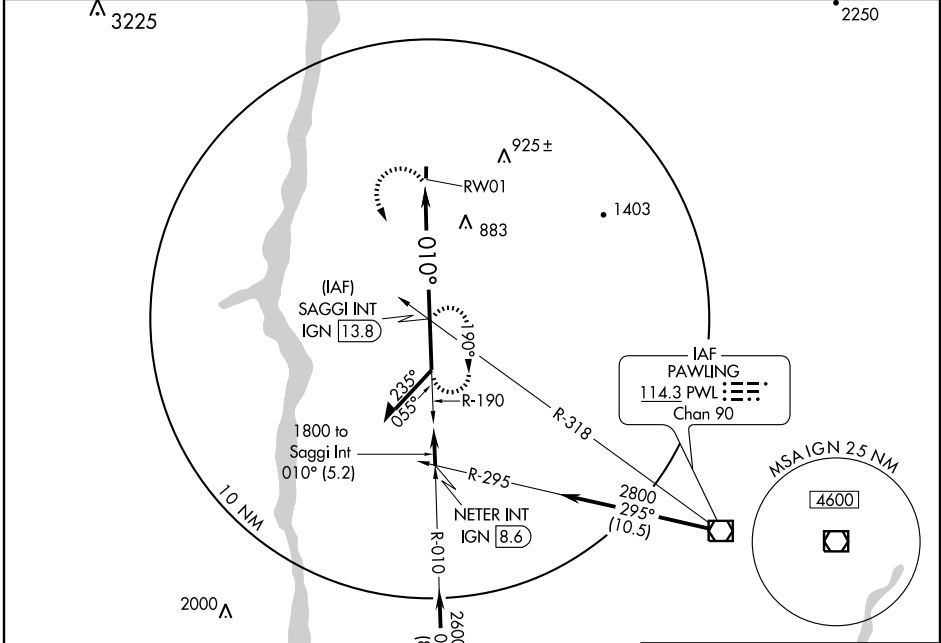
VOR/DME IGN 117.6 Chan 123	APP CRS 010°	Rwy Idg TDZE 323 Apt Elev 323
--	------------------------	---

VOR or GPS RWY 1

RED HOOK / SKY PARK (46N)

NA Use Poughkeepsie, NY altimeter setting. MISSED APPROACH: Climbing left turn to 2600 via IGN R-010 to SAGGI Int/13.8 DME and hold.

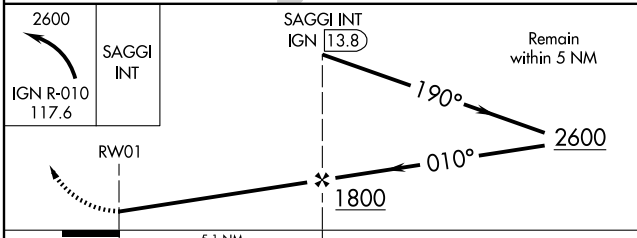
NEW YORK APP CON **132.75 363.1** CTAF **122.9**



NE-2, 22 OCT 2009 to 19 NOV 2009

NE-2, 22 OCT 2009 to 19 NOV 2009

Final approach from Saggi Int holding pattern not authorized. Procedure turn required.



ELEV 323												
61 0.3% UP 2664 X 30 TDZE 323												
010° 5.1 NM from FAF												
LIRL Rwy 1-19												
FAF to MAP 5.1 NM												
<table border="1"> <tr> <td>Knots</td> <td>60</td> <td>90</td> <td>120</td> <td>150</td> <td>180</td> </tr> <tr> <td>Min:Sec</td> <td>5:06</td> <td>3:24</td> <td>2:33</td> <td>2:02</td> <td>1:42</td> </tr> </table>	Knots	60	90	120	150	180	Min:Sec	5:06	3:24	2:33	2:02	1:42
Knots	60	90	120	150	180							
Min:Sec	5:06	3:24	2:33	2:02	1:42							

CATEGORY	A	B	C	D
S-1	1340-1¼ 1017 (1100-1¼)		NA	
CIRCLING	1340-1¼ 1017 (1100-1¼)		NA	

RED HOOK, NEW YORK
Amdt 5 08101

41°59'N - 73°50'W

RED HOOK / SKY PARK (46N)
VOR or GPS RWY 1