

WOLDE TWO ARRIVAL (RNAV)

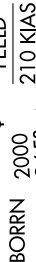
HOUSTON, TEXAS

6000 22 OCT 2009 to 19 NOV 2009

HOUSTON APP CON
 134.65 290.5
 GEORGE BUSH INTERCONTINENTAL/
 HOUSTON ATIS
 124.05
 DAVID WAYNE HOOKS MEMORIAL ATIS
 124.95
 LONE STAR EXECUTIVE ATIS
 118.325

ARRIVAL DESCRIPTION
 HARVEY TRANSITION (HRV.WOLDE2):
 KLAMS TRANSITION (KLAMS.WOLDE2):
 LEEVILLE TRANSITION (LEV.WOLDE2):
 SABINE PASS TRANSITION (SBI.WOLDE2):
 SEMMES TRANSITION (SJI.WOLDE2):

From WOLDE WP via 291° track to DRAPH WP, thence as depicted to FEELD WP.
 FOR GEORGE BUSH INTERCONTINENTAL/HOUSTON (IAH):
 LANDING RUNWAYS 8L/R and 9: From FEELD WP via 265° track to BORRN WP. Expect vectors to final approach course prior to BORRN WP, if not received by BORRN WP fly present heading.
 FOR ALL OTHER RUNWAYS: Expect vectors to final approach course prior to FEELD WP.
 FOR ALL OTHER AIRPORTS: Expect vectors to final approach course prior to FEELD WP.



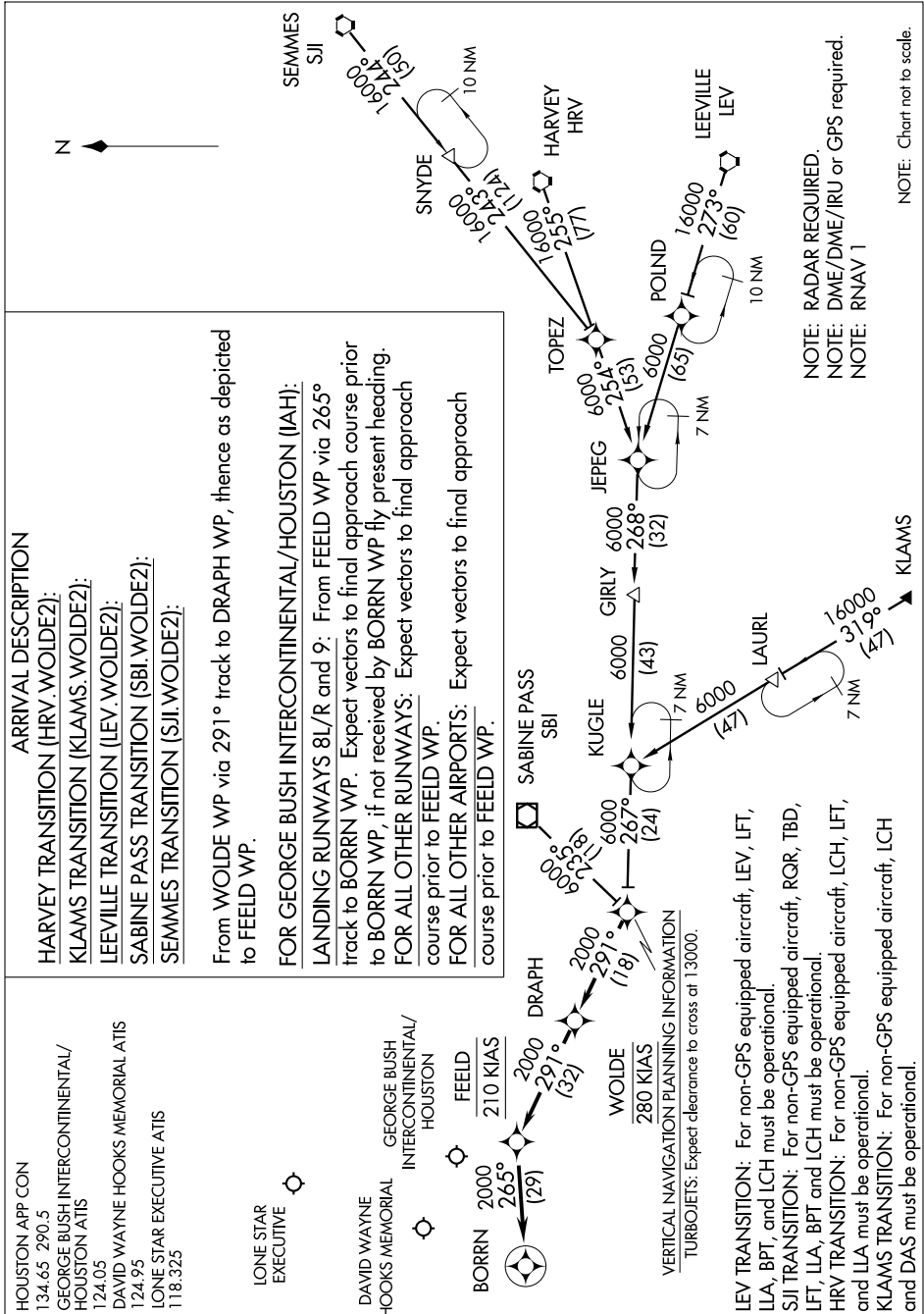
VERTICAL NAVIGATION PLANNING INFORMATION
 TURBOJET: Expect clearance to cross at 13000.

LEV TRANSITION: For non-GPS equipped aircraft, LEV, LFT, LLA, BPT, and LCH must be operational.
SJI TRANSITION: For non-GPS equipped aircraft, RQR, TBD, LFT, LLA, BPT and LCH must be operational.
HRV TRANSITION: For non-GPS equipped aircraft, LCH, LFT, and LLA must be operational.
KLAMS TRANSITION: For non-GPS equipped aircraft, LCH and DAS must be operational.

WOLDE TWO ARRIVAL (RNAV)

HOUSTON, TEXAS

SC-5, 22 OCT 2009 to 19 NOV 2009



NOTE: RADAR REQUIRED.
 NOTE: DME/DME/IRU or GPS required.
 NOTE: RNAV 1

NOTE: Chart not to scale.