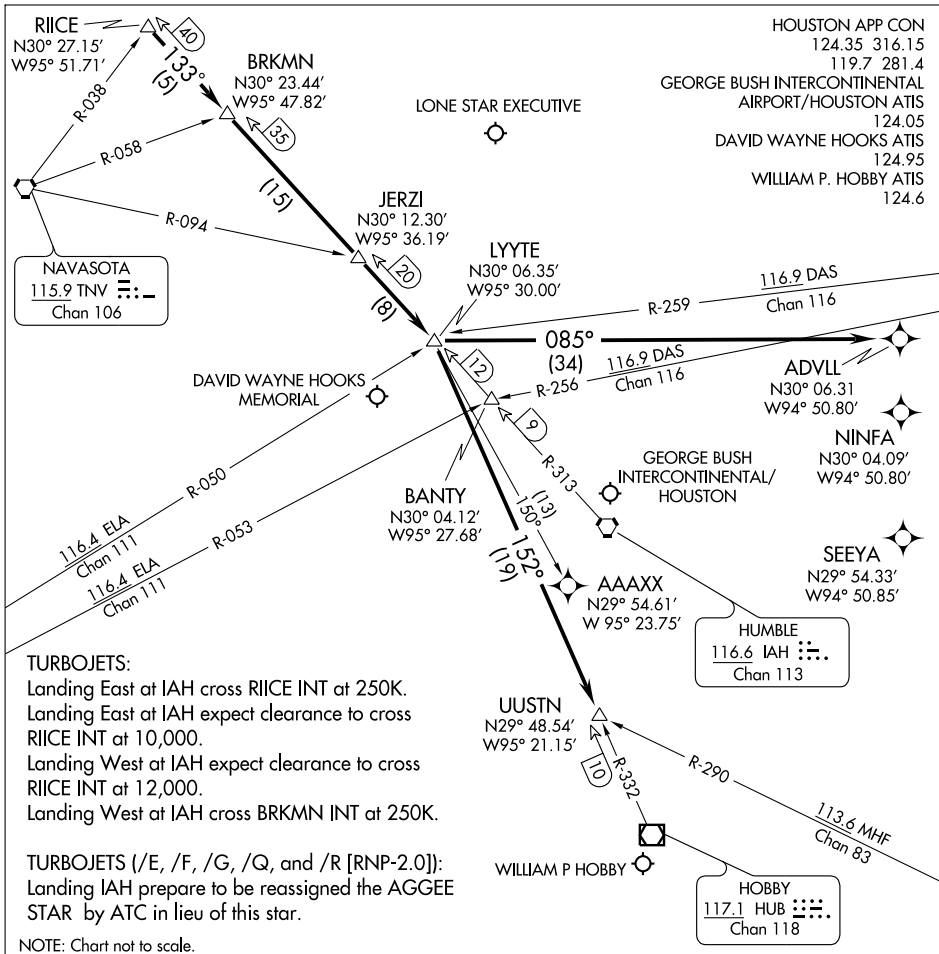


(RIICE.RIICE2) 08213

ST-5461 (FAA)

# RIICE TWO ARRIVAL Arrival Routes

HOUSTON, TEXAS



SC-5, 22 OCT 2009 to 19 NOV 2009

SC-5, 22 OCT 2009 to 19 NOV 2009

### GEORGE BUSH INTERCONTINENTAL/HOUSTON (IAH):

....From over RIICE INT via IAH R-313 to LYYTE INT. Landing Runway 26L/26R or 27; fly heading 085° for vectors to final approach course. For /E, /F, /G, /Q and /R (RNP-2.0), equipped aircraft from LYYTE INT direct ADVLL WP, expect vectors to final approach course prior to ADVLL WP; if not received by ADVLL WP, fly present heading.

### WILLIAM P. HOBBY (HOU) (ATC ASSIGNED):

....From over RIICE INT via IAH R-313 to LYYTE INT, then via HUB R-332 to UUSTN INT, expect vectors to final approach course at or prior to UUSTN INT.

### DAVID WAYNE HOOKS MEMORIAL (DWH) and LONE STAR EXECUTIVE (CXO):

....From over RIICE INT via IAH R-313 to LYYTE INT, expect vectors to final approach course at or prior to LYYTE INT.

ALL OTHER RUNWAYS: Expect vectors to final approach course at or prior to LYYTE INT.

# RIICE TWO ARRIVAL Arrival Routes

HOUSTON, TEXAS

(RIICE.RIICE2) 08213