

WAAS CH 86806 W27A	APP CRS 272°	Rwy Idg TDZE Apt Elev	6500 770 770
--	------------------------	-----------------------------	---

RNAV (GPS) RWY 27

VALPARAISO / PORTER COUNTY MUNI (VPZ)

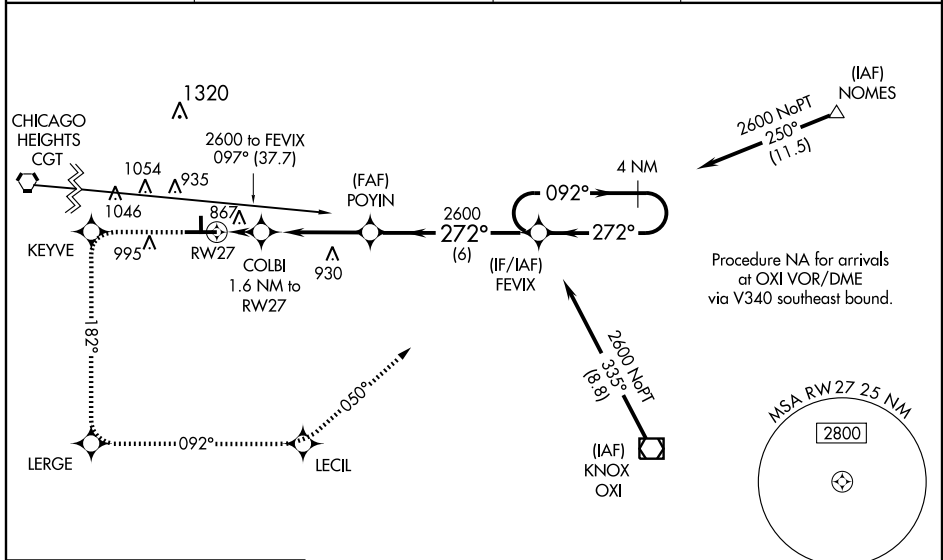
⚠ When local altimeter setting not received, use Lansing Muni altimeter setting and increase all DAs 77 feet and all MDAs 80 feet, and increase LPV and LNAV/VNAV all Cats, and circling Cat C visibility 1/4 mile. For inoperative MALSR, increase LNAV Cat D visibility to 1 1/4, when using Lansing Muni altimeter setting increase LPV all Cats visibility to 1 1/4. Baro-VNAV NA when using Lansing Muni altimeter setting. For uncompensated Baro-VNAV systems, procedure NA below -16°C (4°F) or above 47°C (116°F). DME/DME RNP -0.3 NA.

MALSR



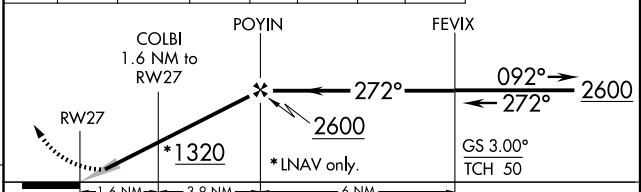
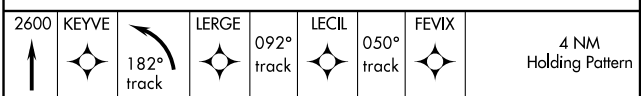
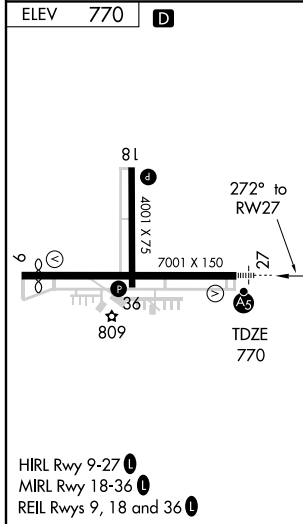
MISSED APPROACH:
Climb to 2600 direct KEYVE and left turn via 182° track to LERGE and via 092° track to LECIL and via 050° track to FEVIX and hold.

ASOS 125.875	SOUTH BEND APP CON * 132.05 257.8	CLNC DEL 120.525	UNICOM 122.725 (CTAF)
------------------------	---	----------------------------	---------------------------------



EC-2, 22 OCT 2009 to 19 NOV 2009

EC-2, 22 OCT 2009 to 19 NOV 2009



CATEGORY	A	B	C	D
LPV DA		1020-1/2	250 (300 -1/2)	
LNAV/VNAV DA		1201-1	431 (500 -1)	
LNAV MDA	1180-1/2	410 (500 -1/2)	1180-3/4 410 (500-3/4)	1180-1 410 (500-1)
CIRCLING	1260-1 490 (500-1)	1300-1 530 (600-1)	1300-1 1/2 530 (600-1 1/2)	1360-2 590 (600-2)