

VALPARAISO, INDIANA

AL-5460 (FAA)

# RNAV (GPS) RWY 18

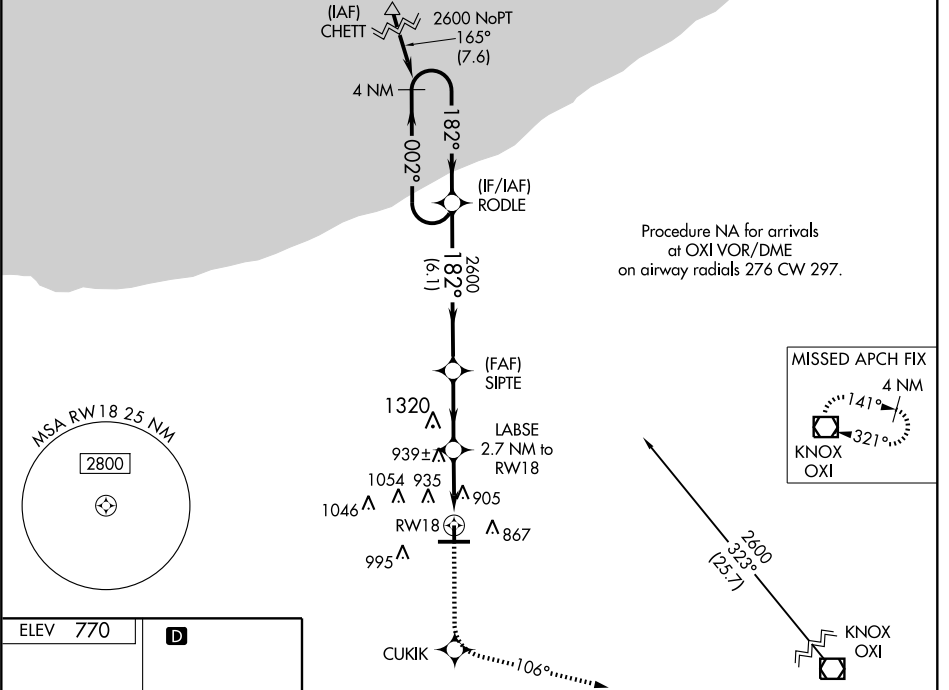
VALPARAISO / PORTER COUNTY MUNI (VPZ)

|                                 |                        |                             |   |
|---------------------------------|------------------------|-----------------------------|---|
| WAAS<br>CH <b>82406</b><br>W18A | APP CRS<br><b>182°</b> | Rwy Idg<br>TDZE<br>Apt Elev | <b>4001</b><br><b>770</b><br><b>770</b> |
|---------------------------------|------------------------|-----------------------------|---|

**⚠** When local altimeter setting not received, use Lansing Muni altimeter setting and increase all DAs 77 feet and all MDAs 80 feet, and increase LPV and LNAV/VNAV all Cats visibility ¼ mile. Baro-VNAV and VDP NA when using Lansing Muni altimeter setting. For uncompensated Baro-VNAV systems, procedure NA below -1.6°C (4°F) or above 54°C (130°F). DME/DME RNP -0.3 NA. Visibility reduction by helicopters NA.

**MISSED APPROACH:**  
Climb to 2600 direct CUKIK and via 106° track to OXI VOR/DME and hold.

|                        |   |                            |                                 |
|------------------------|---|----------------------------|---------------------------------|
| ASOS<br><b>125.875</b> | SOUTH BEND APP CON *<br><b>132.05 257.8</b> | CLNC DEL<br><b>120.525</b> | UNICOM<br><b>122.725 (CTAF)</b> |
|------------------------|---|----------------------------|---------------------------------|



EC-2, 22 OCT 2009 to 19 NOV 2009

EC-2, 22 OCT 2009 to 19 NOV 2009

ELEV 770 **D**

182° to RWY 18

81 TDZE 770

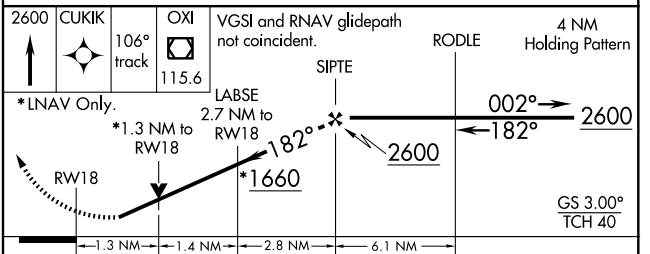
4001 x 75

7001 x 150

36

809

HIRL Rwy 9-27 **Ⓛ**  
MIRL Rwy 18-36 **Ⓛ**  
REIL Rwy 9, 18 and 36 **Ⓛ**



| CATEGORY     | A           | B            | C  | D  |
|--------------|-------------|--------------|----|----|
| LPV DA       | 1120-1¼     | 350 (400-1¼) | NA | NA |
| LNAV/VNAV DA | 1233-1¾     | 463 (500-1¾) | NA | NA |
| LVAV MDA     | 1200-1      | 430 (500-1)  | NA | NA |
| CIRCLING     | 1260-1      | 1300-1       | NA | NA |
|              | 490 (500-1) | 530 (600-1)  |    |    |

VALPARAISO, INDIANA  
Orig 08325

VALPARAISO / PORTER COUNTY MUNI (VPZ)

41°27'N - 87°00'W

# RNAV (GPS) RWY 18