

VALPARAISO, INDIANA

AL-5460 (FAA)

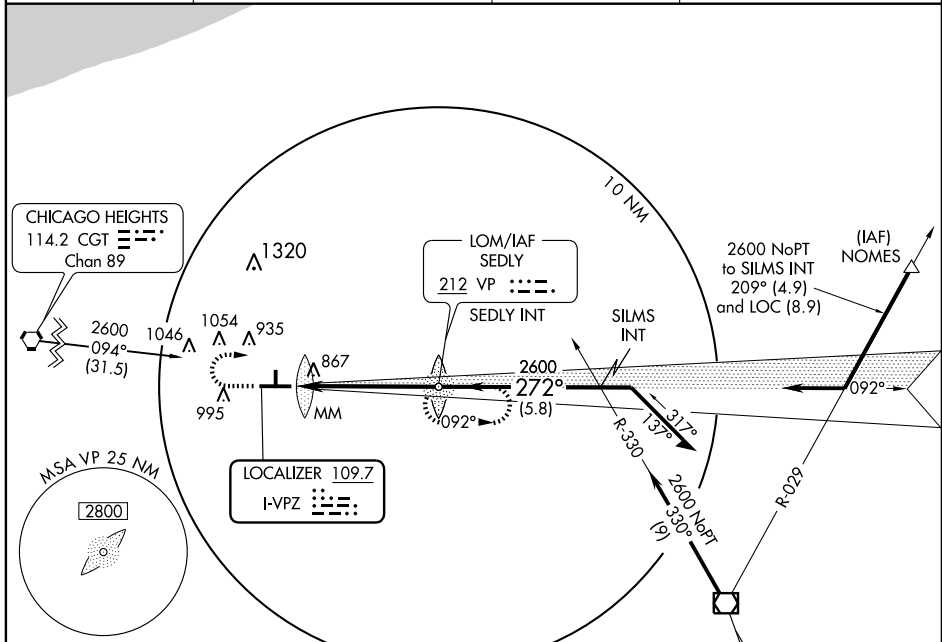
# ILS RWY 27

VALPARAISO / PORTER COUNTY MUNI (VPZ)

LOC I-VPZ <b>109.7</b>	APP CRS <b>272°</b>	Rwy Idg 6500
	TDZE 770	
	Apt Elev 771	

	MALS R	MISSED APPROACH: Climb to 1400, then climbing right turn of 2600 direct SEDLY LOM and hold.

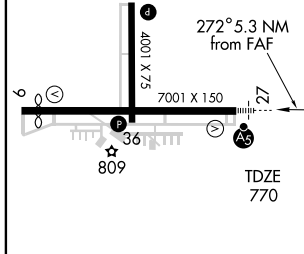
ASOS <b>125.875</b>	SOUTH BEND APP CON * <b>132.05 257.8</b>	CLNC DEL <b>120.525</b>	UNICOM <b>122.725</b> (CTAF)
------------------------	---	----------------------------	---------------------------------



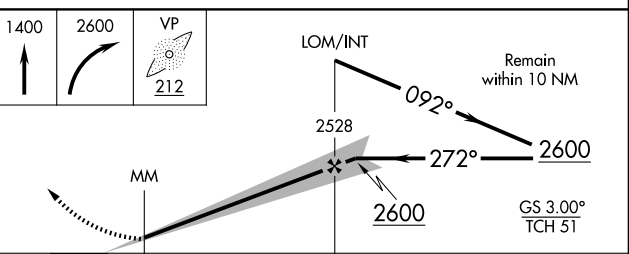
EC-2, 22 OCT 2009 to 19 NOV 2009

EC-2, 22 OCT 2009 to 19 NOV 2009

ELEV 771	<b>D</b>
----------	----------



## ADF REQUIRED



CATEGORY	A	B	C	D
S-ILS 27	970-1/2 200 (200-1/2)			
S-LOC 27	1120-1/2 350 (400-1/2)			1120-3/4 350 (400-3/4)
CIRCLING	1260-1 489 (500-1)	1300-1 529 (600-1)	1300-1 1/2 529 (600-1 1/2)	1360-2 589 (600-2)

VALPARAISO, INDIANA  
Amdt 3 08325

VALPARAISO / PORTER COUNTY MUNI (VPZ)

41°27'N - 87°00'W

# ILS RWY 27