

ORMOND BEACH, FLORIDA

AL-5459 (FAA)

VORTAC OMN <b>112.6</b> Chan <b>73</b>	APP CRS <b>162°</b>	Rwy Idg TDZE <b>27</b> Apt Elev <b>28</b>	<b>3701</b>
--	------------------------	---	-------------

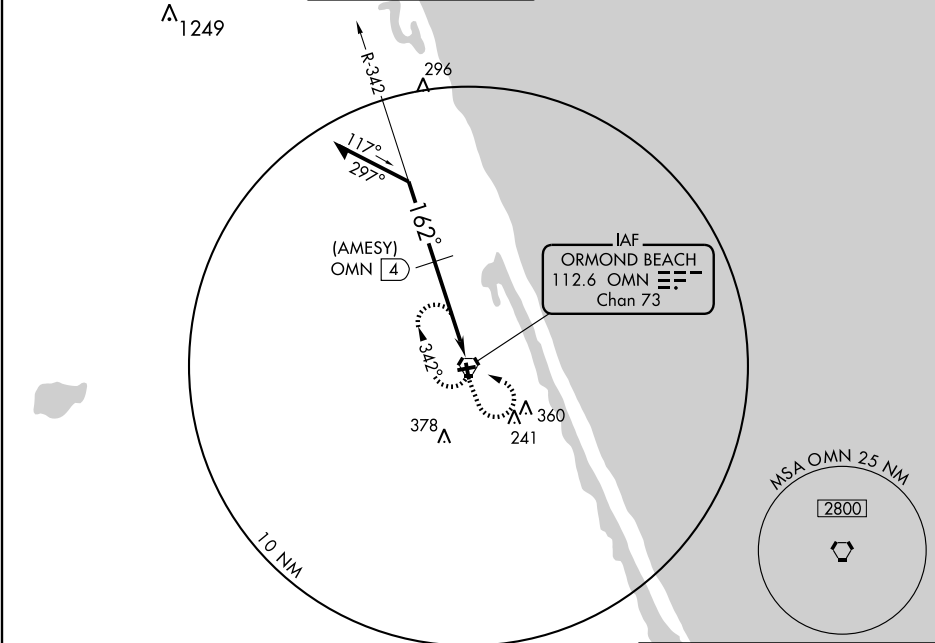
# VOR or GPS RWY 17

ORMOND BEACH MUNI (OMN)

**NA** Use Daytona Beach altimeter setting.  
ASR

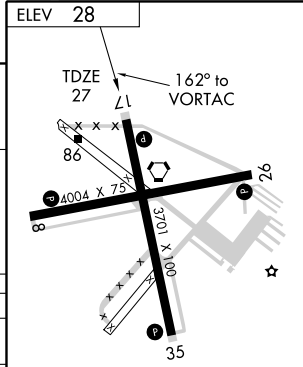
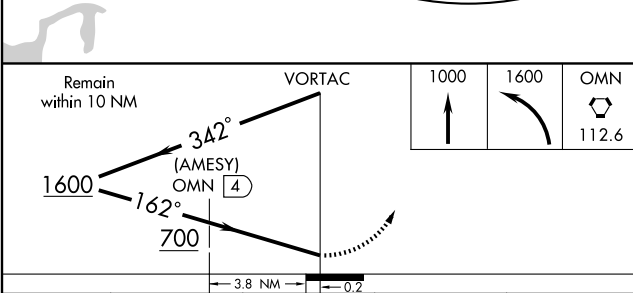
MISSED APPROACH: Climb to 1000 then climbing left turn to 1600 direct OMN VORTAC and hold.

ATIS <b>118.475</b>	DAYTONA APP CON <b>125.8 385.5</b>	ORMOND BEACH TOWER★ <b>119.075</b> (CTAF) <b>0</b>	GND CON <b>121.625</b>	CLNC DEL <b>121.625</b>	UNICOM <b>123.05</b>
------------------------	---------------------------------------	---	---------------------------	----------------------------	-------------------------



SE-3, 22 OCT 2009 to 19 NOV 2009

SE-3, 22 OCT 2009 to 19 NOV 2009



CATEGORY	A	B	C	D
S-17	700-1	673 (700-1)	700-2 673 (700-2)	NA
CIRCLING	700-1	672 (700-1)	700-2 672 (700-2)	NA
DME MINIMUMS				
S-17	480-1	453 (500-1)	480-1½ 453 (500-1½)	NA
CIRCLING	500-1	472 (500-1)	500-1½ 472 (500-1½)	NA

REIL Rwy 17 **0**  
MIRL Rwy 8-26 and 17-35 **0**

ORMOND BEACH, FLORIDA  
Amdt 1C 09211

29°18'N - 81°07'W

# ORMOND BEACH MUNI (OMN)

## VOR or GPS RWY 17