

RNAV (GPS) RWY 12

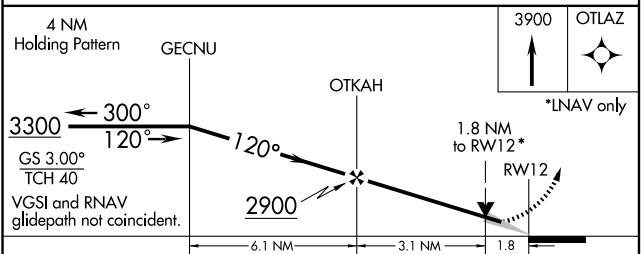
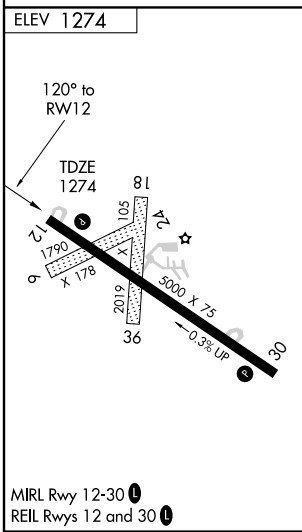
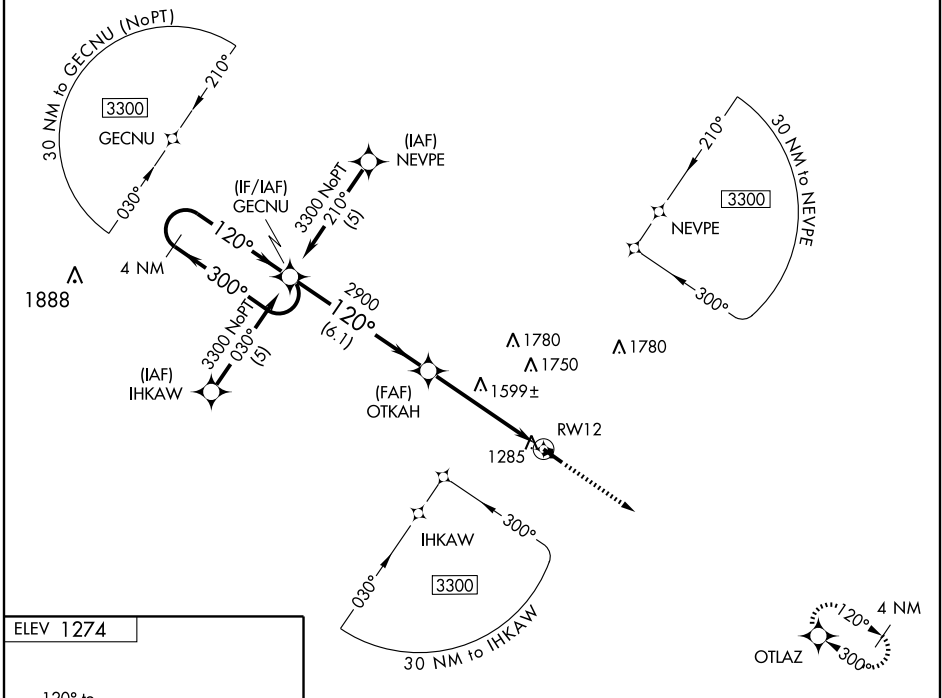
DENISON MUNI (DNS)

| | | | |
|--|------------------------|-----------------------------|---|
| WAAS Ch 90409 W12A | APP CRS 120° | Rwy Idg TDZE Apt Elev | 5000 1274 1274 |
|--|------------------------|-----------------------------|---|

NA DME/DME RNP-0.3 NA. For uncompensated BARO-VNAV systems, LNAV/VNAV NA below -17°C (2°F) or above 54°C (130°F).
NA BARO-VNAV and VDP NA when using Carroll altimeter setting.
 When local altimeter setting not received, use Carroll altimeter setting and increase all DA 72 feet and all MDA 80 feet. Increase LPV visibility ¼ mile all Cats, LNAV/VNAV ¼ mile all Cats, LNAV Cat C ¼ mile, and circling Cat C ¼ mile.

MISSED APPROACH: Climb to 3900 direct OTLAZ and hold.

| | | |
|-------------------------|--|-------------------------------|
| AWOS-3 119.95 | MINNEAPOLIS CENTER 119.6 290.4 | UNICOM 122.8 (CTAF) |
|-------------------------|--|-------------------------------|



| CATEGORY | A | B | C | D |
|--------------|--------------------|--------------------|------------------------|----|
| LPV DA | | 1524-1 250 (300-1) | | NA |
| LNAV/VNAV DA | | 1554-1 280 (300-1) | | NA |
| LNAV MDA | 1860-1 586 (600-1) | | 1860-1 ½ 586 (600-1 ½) | NA |
| CIRCLING | 1860-1 586 (600-1) | 1880-1 606 (700-1) | 1880-1 ¾ 606 (700-1 ¾) | NA |

NC-3, 22 OCT 2009 to 19 NOV 2009

NC-3, 22 OCT 2009 to 19 NOV 2009