

DENISON, IOWA

AL-5458 (FAA)

NDB RWY 30

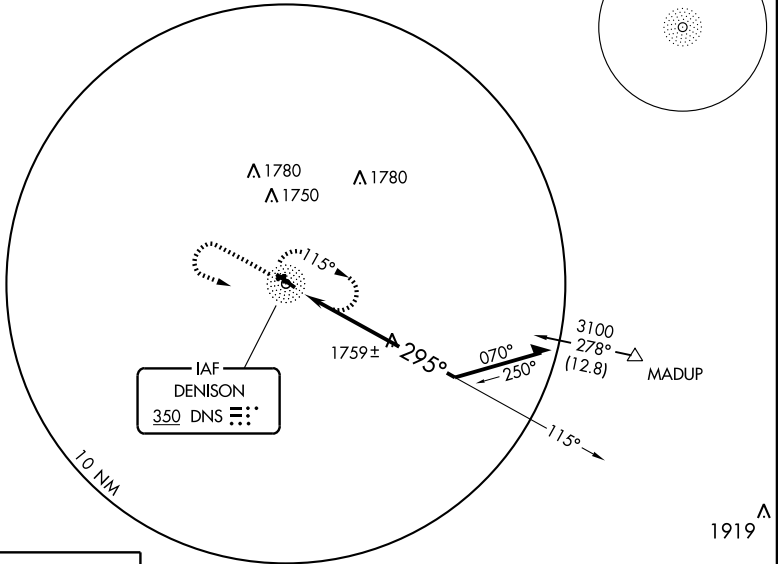
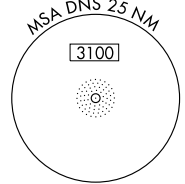
DENISON MUNI (DNS)

NDB DNS 350	APP CRS 295°	Rwy Idg TDZE Apt Elev	5000 1266 1274
-----------------------	------------------------	-----------------------------	---

▼ Visibility reduction by helicopters NA.
▲ NA When local altimeter setting not received, use Carroll altimeter setting and increase all MDA 80 feet and S-30/Circling Cat A and C visibility 1/4 mile.

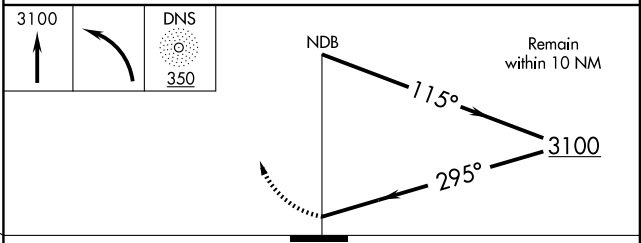
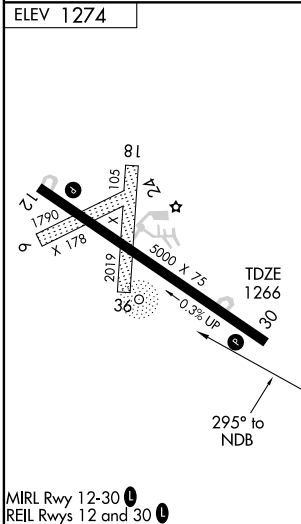
MISSED APPROACH: Climb to 3100 then left turn direct DNS NDB and hold.

AWOS-3 119.95	MINNEAPOLIS CENTER 119.6 290.4	UNICOM 122.8 (CTAF) 0
-------------------------	--	---------------------------------



NC-3, 22 OCT 2009 to 19 NOV 2009

NC-3, 22 OCT 2009 to 19 NOV 2009



CATEGORY	A	B	C	D
S-30	2120-1 854 (900-1)	2120-1¼ 854 (900-1¼)	2120-2½ 854 (900-2½)	NA
CIRCLING	2120-1 846 (900-1)	2120-1¼ 846 (900-1¼)	2120-2½ 846 (900-2½)	NA

MIRL Rwy 12-30
REIL Rwy 12 and 30

DENISON, IOWA
Amdt 6 09071

41°59'N - 95° 23'W

DENISON MUNI (DNS)

NDB RWY 30