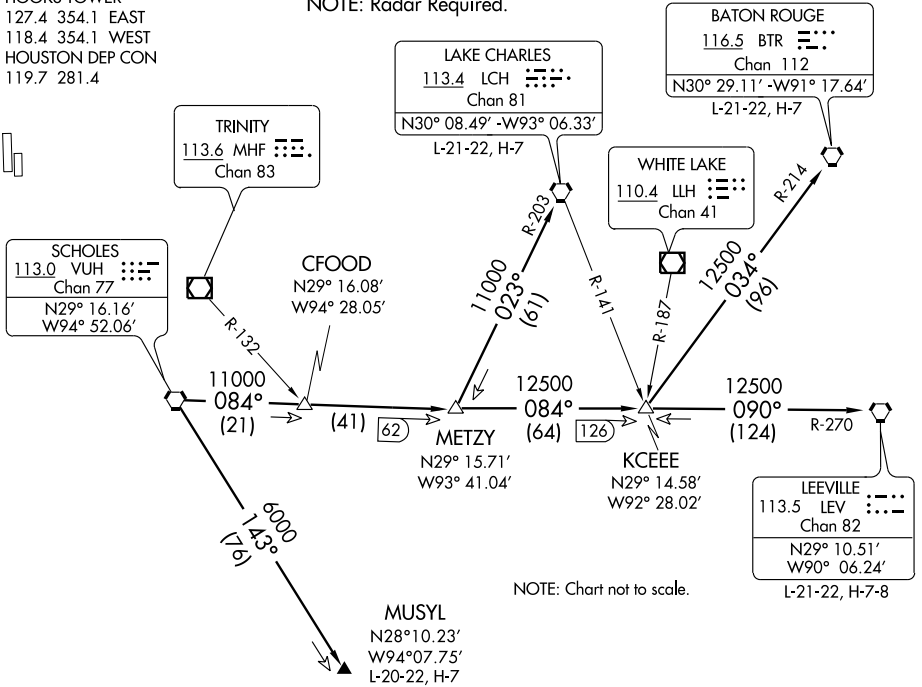


ATIS 124.95
CLNC DEL 119.45
GND CON
121.8 239.0
HOOKS TOWER*
127.4 354.1 EAST
118.4 354.1 WEST
HOUSTON DEP CON
119.7 281.4

NOTE: LCH, BTR, and LEV transitions are ATC assigned only, do not file.
NOTE: For LCH, BTR, LEV transitions, this procedure requires over water flight not to exceed 35 miles from nearest shoreline.
NOTE: Radar Required.



TAKE-OFF MINIMUMS:
Rwys 17R, 35L standard.
Rwy 17L, 35R NA - environmental.
Waterway 17, 35 NA - air traffic.

NOTE: Chart not to scale.

(TAKE-OFF NOTES ON FOLLOWING PAGE)

DEPARTURE ROUTE DESCRIPTION

When entering controlled airspace, fly assigned heading for vectors to VUH VORTAC, maintain 4000', expect filed altitude 10 minutes after departure.

BATON ROUGE TRANSITION (VUH3.BTR): From over VUH VORTAC via VUH R-084 to KCEEE INT, then via BTR R-214 to BTR VORTAC.

LAKE CHARLES TRANSITION (VUH3.LCH): From over VUH VORTAC via VUH R-084 to METZY INT, then via LCH R-203 to LCH VORTAC.

LEEVILLE TRANSITION (VUH3.LEV): From over VUH VORTAC via VUH R-084 to KCEEE INT, then via LEV R-270 to LEV VORTAC.

MUSYL TRANSITION (VUH3.MUSYL): From over VUH VORTAC via VUH R-143 to MUSYL.