

HOUSTON, TEXAS

AL-5457 (FAA)

WAAS CH 45603 W35A	APP CRS 348°	Rwy ldg 6700 TDZE 152 Apt Elev 152
--	------------------------	---

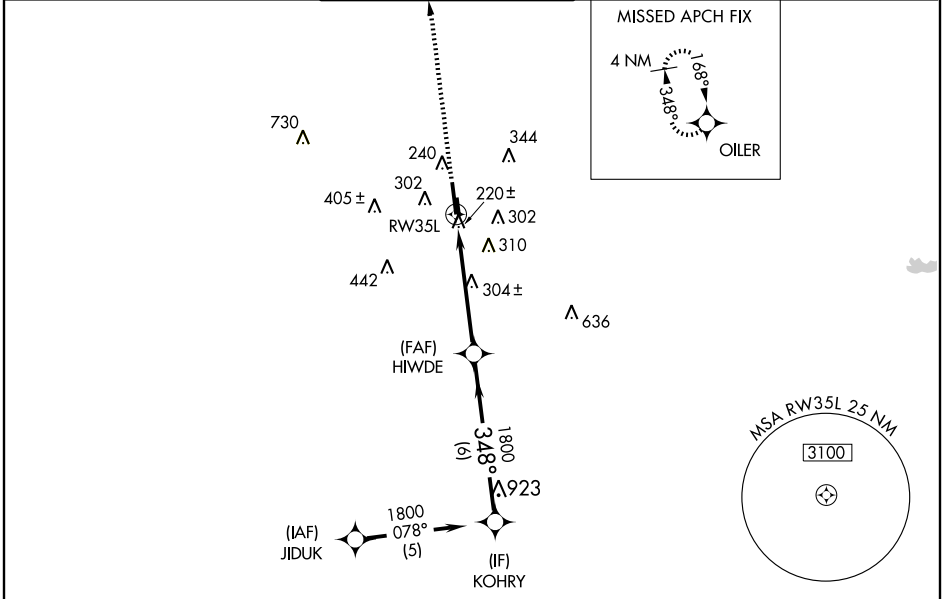
RNAV (GPS) RWY 35L

HOUSTON/DAVID WAYNE HOOKS MEMORIAL (DWH)

T Baro-VNAV NA when using George Bush Intercontinental/Houston altimeter setting.
For uncompensated Baro-VNAV systems, LNAV/VNAV NA below -15°C (5°F) or above 48°C (119°F). DME/DME RNP-0.3 NA. Visibility reduction by helicopters NA.
A If local altimeter setting not received, use George Bush Intercontinental/Houston altimeter setting and increase all DAs 36 feet, and all MDAs 40 feet.

MISSED APPROACH: Climb to 2000 direct OILER and hold.

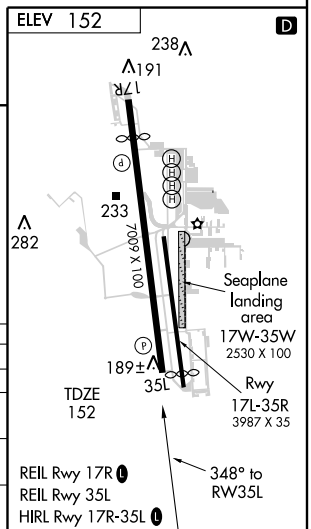
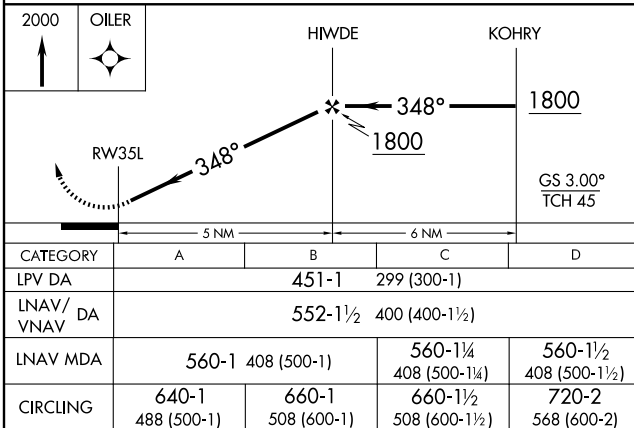
ATIS 124.95	HOUSTON APP CON 119.7 281.4	HOOKS TOWER* 127.4 354.1 (EAST) 118.4 (CTAF) 0 354.1 (WEST)	GND CON 121.8 239.0	CLNC DEL 119.45	UNICOM 122.95
-----------------------	---------------------------------------	---	-------------------------------	---------------------------	-------------------------



SC-5, 22 OCT 2009 to 19 NOV 2009

SC-5, 22 OCT 2009 to 19 NOV 2009

RADAR REQUIRED



HOUSTON, TEXAS
Amdt 1 09015

HOUSTON/DAVID WAYNE HOOKS MEMORIAL (DWH)

30° 04' N-95° 33' W

RNAV (GPS) RWY 35L