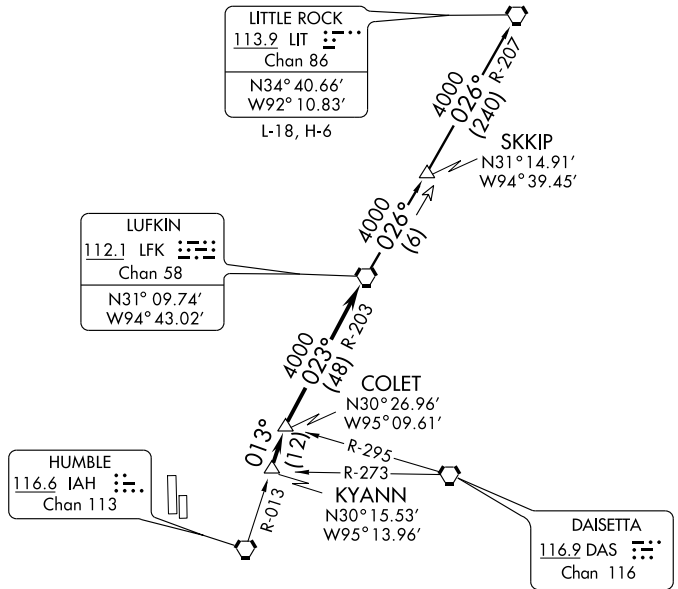


ATIS 124.95
 CLNC DEL
 119.45
 GND CON
 121.8 239.0
 HOOKS TOWER★
 127.4 354.1 (EAST)
 118.4 (CTAF) 354.1 (WEST)
 HOUSTON DEP CON
 119.7 281.4



NOTE: Radar Required.
 NOTE: For aircraft destined LIT, or overflying LIT or PXV.

TAKE-OFF MINIMUMS:
 Rwy 17R, 35L, standard.
 Rwy 17L, 35R NA - environmental.
 Waterway 17, 35 NA - air traffic.

NOTE: Chart not to scale.

(NOTES ON FOLLOWING PAGE)



DEPARTURE ROUTE DESCRIPTION

When entering controlled airspace, fly assigned heading for vectors to KYANN INT, maintain 4000', expect filed altitude 10 minutes after departure. Thence . . .

. . . via IAH R-013 to COLET INT, then right turn via LFK R-203 to LFK VORTAC.

LITTLE ROCK TRANSITION (LFK5.LIT): From over LFK VORTAC via LFK R-026 to SKKIP INT, then via LIT R-207 to LIT VORTAC.