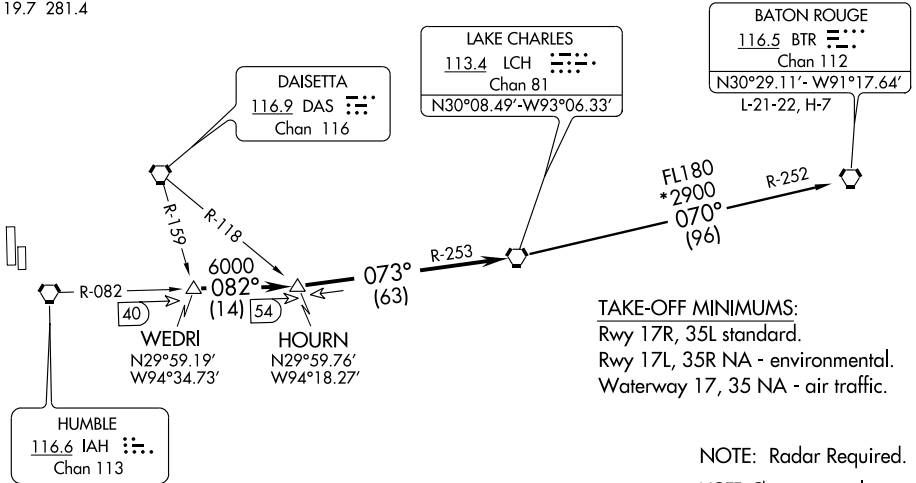


ATIS 124.95  
CLNC DEL 119.45  
GND CON  
121.8 239.0  
HOOKS TOWER ★  
127.4 354.1 (EAST)  
118.4 354.1 (WEST)  
HOUSTON DEP CON  
119.7 281.4



TAKE-OFF MINIMUMS:  
Rwy 17R, 35L standard.  
Rwy 17L, 35R NA - environmental.  
Waterway 17, 35 NA - air traffic.

NOTE: Radar Required.  
NOTE: Chart not to scale.

TAKE-OFF OBSTACLES

- Rwy 17R, Multiple trees beginning 708' from DER, 68' left of centerline, up to 71' AGL/220' MSL. Multiple hangars beginning 433' from DER, 515' left of centerline, up to 37' AGL/182' MSL. DME antenna 653' from DER, 256' left of centerline, 13' AGL/162' MSL. Multiple trees and pole beginning 85' from DER, 294' right of centerline, up to 45' AGL/189' MSL.
- Rwy 35L, Multiple trees and poles beginning 144' from DER, 32' left of centerline, up to 79' AGL/238' MSL. Multiple hangars and buildings beginning 85' from DER, 9' left of centerline, up to 53' AGL/202' MSL. Multiple trees, towers and pole beginning 100' from DER, 124' right of centerline, up to 93' AGL/247' MSL. Vehicle and road 315' from DER, on centerline 15' AGL/166' MSL. Building 894' from DER, 231' right of centerline, 23' AGL/173' MSL.

DEPARTURE ROUTE DESCRIPTION

When entering controlled airspace, fly assigned heading for vectors to WEDRI INT, maintain 4000, expect filed altitude 10 minutes after departure.  
Thence . . . .  
. . . . via IAH R-082 to HOURN INT, then via LCH R-253 to LCH VORTAC.

BATON ROUGE TRANSITION (LCH1.BTR): From over LCH VORTAC via LCH R-070 and BTR R-252 to BTR VORTAC.

SC-5, 22 OCT 2009 to 19 NOV 2009

SC-5, 22 OCT 2009 to 19 NOV 2009