

(JCT6.JCT) 09071

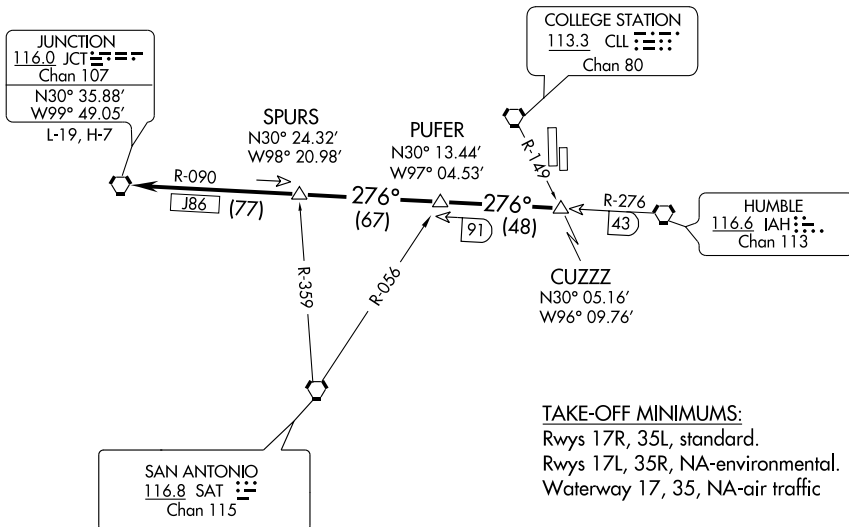
JUNCTION SIX DEPARTURE

HOUSTON/ DAVID WAYNE HOOKS MEMORIAL (DWH)

SL-5457 (FAA)

HOUSTON, TEXAS

ATIS 124.95
CLNC DEL 119.45
GND CON
121.8 239.0
HOOKS TOWER ★
127.4 354.1 EAST
118.4 354.1 WEST
HOUSTON DEP CON
119.7 281.4



TAKE-OFF MINIMUMS:
Rwys 17R, 35L, standard.
Rwys 17L, 35R, NA-environmental.
Waterway 17, 35, NA-air traffic

NOTE: Radar Required.
NOTE: For aircraft overflying JCT VORTAC via J86 filing FL240 or above.

NOTE: Chart not to scale. (NOTES ON FOLLOWING PAGE)



DEPARTURE ROUTE DESCRIPTION

When entering controlled airspace, fly assigned heading for vectors to CUZZZ INT, maintain 4,000', expect filed altitude 10 minutes after departure. Thence . . .

. . . via IAH R-276 and JCT R-090 to JCT VORTAC.

JUNCTION SIX DEPARTURE

(JCT6.JCT) 09071

HOUSTON, TEXAS

HOUSTON/ DAVID WAYNE HOOKS MEMORIAL (DWH)

SC-5, 22 OCT 2009 to 19 NOV 2009

SC-5, 22 OCT 2009 to 19 NOV 2009