

ST. PAUL, MINNESOTA

AL-5455 (FAA)

# NDB RWY 4

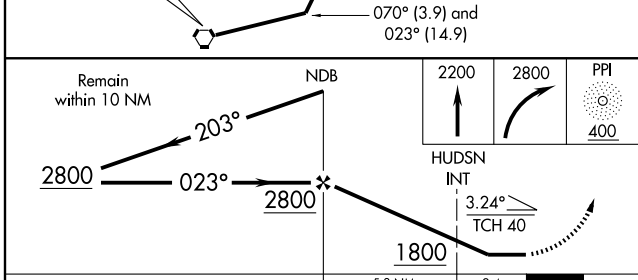
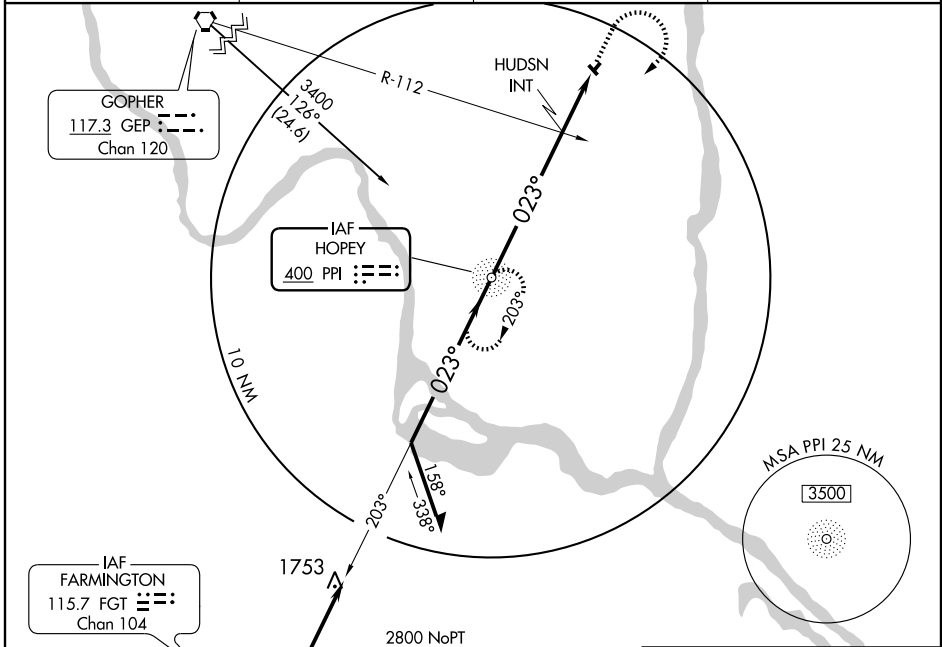
ST. PAUL/LAKE ELMO (21D)

NDB PPI <b>400</b>	APP CRS <b>023°</b>	Rwy Idg <b>2497</b> TDZE <b>932</b> Apt Elev <b>932</b>
-----------------------	------------------------	--

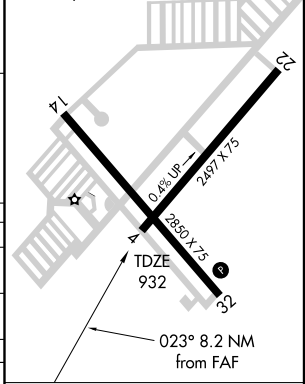
**NA** When local altimeter setting not received, use St. Paul Downtown Holman Field altimeter setting. Straight-in minimums NA at night.

MISSED APPROACH: Climb to 2200 then climbing right turn to 2800 direct PPI NDB and hold.

AWOS-3 <b>120.075</b>	MINNEAPOLIS APP CON <b>121.2</b>	CLNC DEL <b>118.625</b>	UNICOM <b>122.8</b> (CTAF) <b>0</b>
--------------------------	-------------------------------------	----------------------------	--



ELEV 932  
REIL Rwy 14 and 32  
MIRL Rwy 14-32



CATEGORY	A	B	C	D
S-4	1800-1 868 (900-1)	1800-1¼ 868 (900-1¼)	1800-2½ 868 (900-2½)	NA
CIRCLING	1800-1 868 (900-1)	1800-1¼ 868 (900-1¼)	1800-2½ 868 (900-2½)	NA
HUDSN FIX MINIMUMS				
S-4	1520-1 588 (600-1)	588 (600-1)	1520-1½ 588 (600-1½)	NA
CIRCLING	1520-1 588 (600-1)	1540-1 608 (700-1)	1540-1¼ 608 (700-1¼)	NA

FAF to MAP 8.2 NM					
Knots	60	90	120	150	180
Min:Sec	8:12	5:28	4:06	3:17	2:44

NC-1, 22 OCT 2009 to 19 NOV 2009

NC-1, 22 OCT 2009 to 19 NOV 2009

ST. PAUL, MINNESOTA  
Amdt 4A 08325

45°00'N-92°51'W

ST. PAUL/LAKE ELMO (21D)  
**NDB RWY 4**