

OMAK, WASHINGTON

AL-5453 (FAA)

# GPS RWY 35

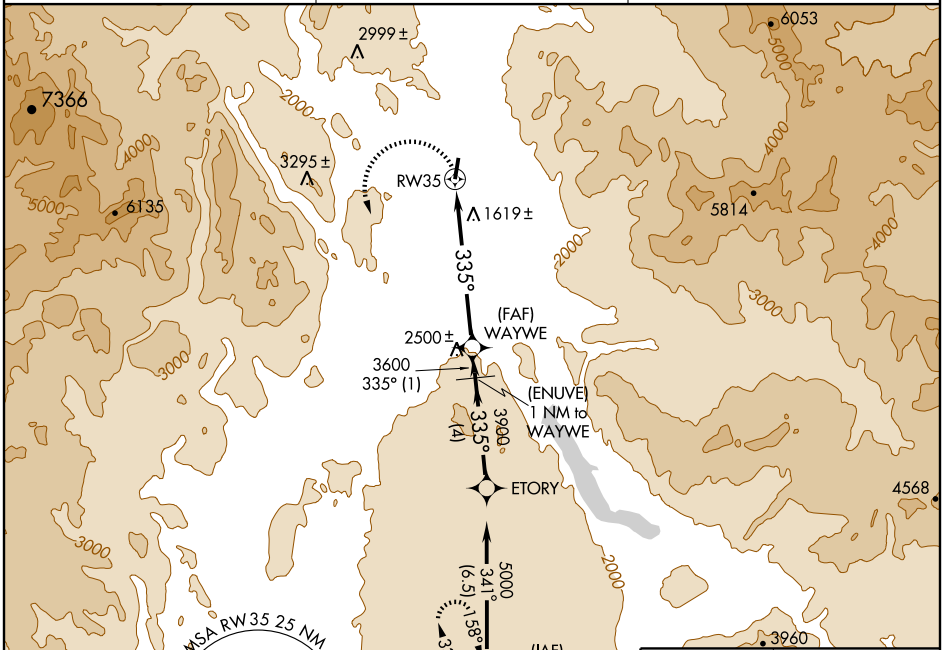
OMAK (OMK)

APP CRS <b>335°</b>	Rwy Idg TDZE Apt Elev	<b>4654</b> <b>1299</b> <b>1301</b>
------------------------	-----------------------------	---

**▽**  
**▲** NA

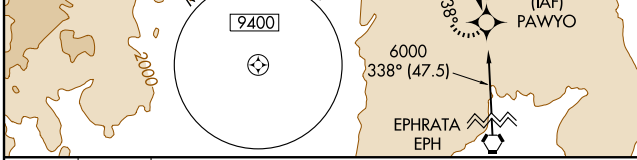
MISSED APPROACH: Climbing left turn to 5000 direct PAWYO WP and hold.

ASOS <b>118.325</b>	SEATTLE CENTER <b>126.1 291.6</b>	UNICOM <b>122.8 (CTAF)</b> <b>0</b>
------------------------	--------------------------------------	--

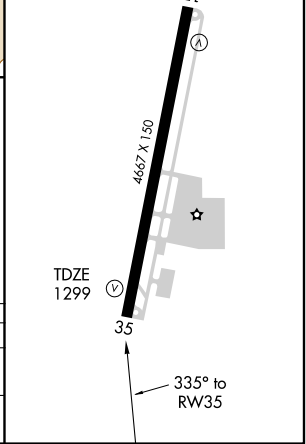
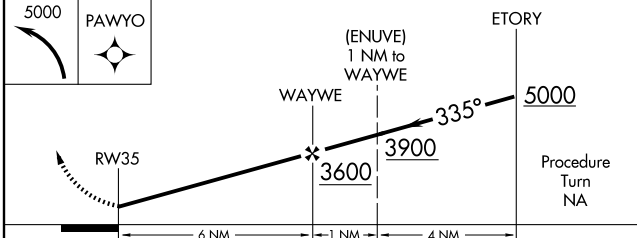


NW-1, 22 OCT 2009 to 19 NOV 2009

NW-1, 22 OCT 2009 to 19 NOV 2009



ELEV 1301
REL Rws 17 and 35
HIRL Rwy 17-35 <b>0</b>



CATEGORY	A	B	C	D
S-35	2840-1¼ 1541 (1600-1¼)	2840-1½ 1541 (1600-1½)	2840-3	1541 (1600-3)
CIRCLING	2840-1¼ 1539 (1600-1¼)	2840-1½ 1539 (1600-1½)	2840-3 1539 (1600-3)	2880-3 1579 (1600-3)

OMAK, WASHINGTON  
Orig 05356

48°28'N-119°31'W

# OMAK (OMK)

## GPS RWY 35