

NDB RWY 20

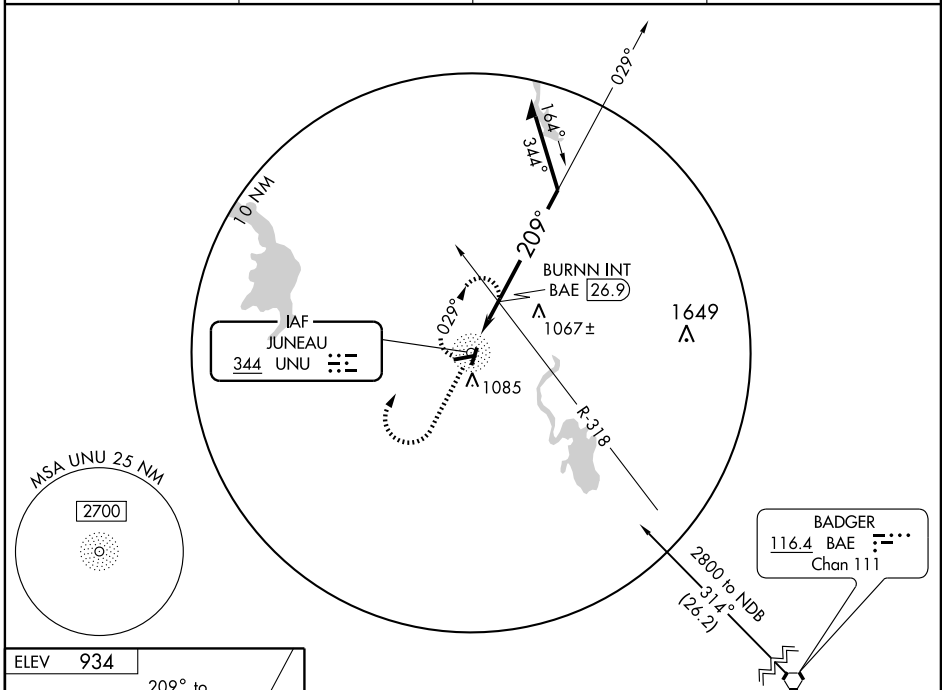
JUNEAU/ DODGE COUNTY (UNU)

NDB UNU 344	APP CRS 209°	Rwy Idg 4029
		TDZE 934
		Apt Elev 934

⚠ If local altimeter setting not received, use Dane County Rgnl-Truax Field altimeter setting and increase all MDAs 100 feet.
 ⚠ Visibility reduction by helicopters NA.

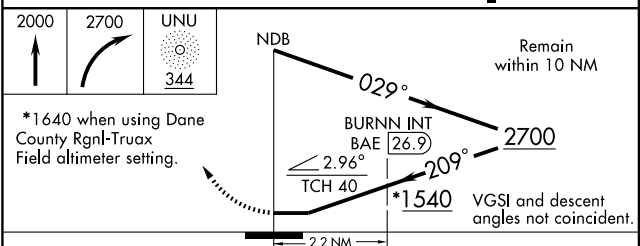
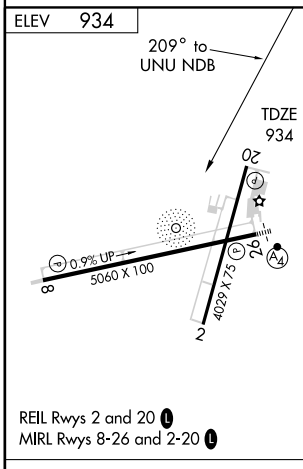
MISSED APPROACH: Climb to 2000 then climbing right turn to 2700 direct UNU NDB and hold.

AWOS-3 119.075	MADISON APP CON 119.15 343.7	GCO 121.725	UNICOM 122.7 (CTAF)
--------------------------	--	-----------------------	-------------------------------



EC-3, 22 OCT 2009 to 19 NOV 2009

EC-3, 22 OCT 2009 to 19 NOV 2009



CATEGORY	A	B	C	D
S-20	1540-1	606 (700-1)	1540-1 ³ / ₄ 606 (700-1 ³ / ₄)	NA
CIRCLING	1540-1	606 (700-1)	1540-1 ³ / ₄ 606 (700-1 ³ / ₄)	NA
BURNN FIX MINIMUMS				
S-20	1420-1	486 (500-1)	1420-1 ¹ / ₄ 486 (500-1 ¹ / ₄)	NA
CIRCLING	1440-1	506 (600-1)	1440-1 ¹ / ₂ 506 (600-1 ¹ / ₂)	NA