

LOC/DME I-JNE <b>109.55</b> Chan <b>32 (Y)</b>	APP CRS <b>261°</b>	Rwy Idg TDZE Apt Elev	<b>5060</b> <b>934</b> <b>934</b>
--	------------------------	-----------------------------	---

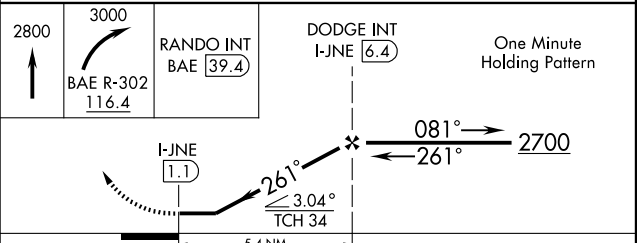
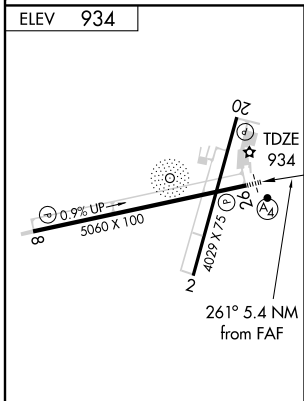
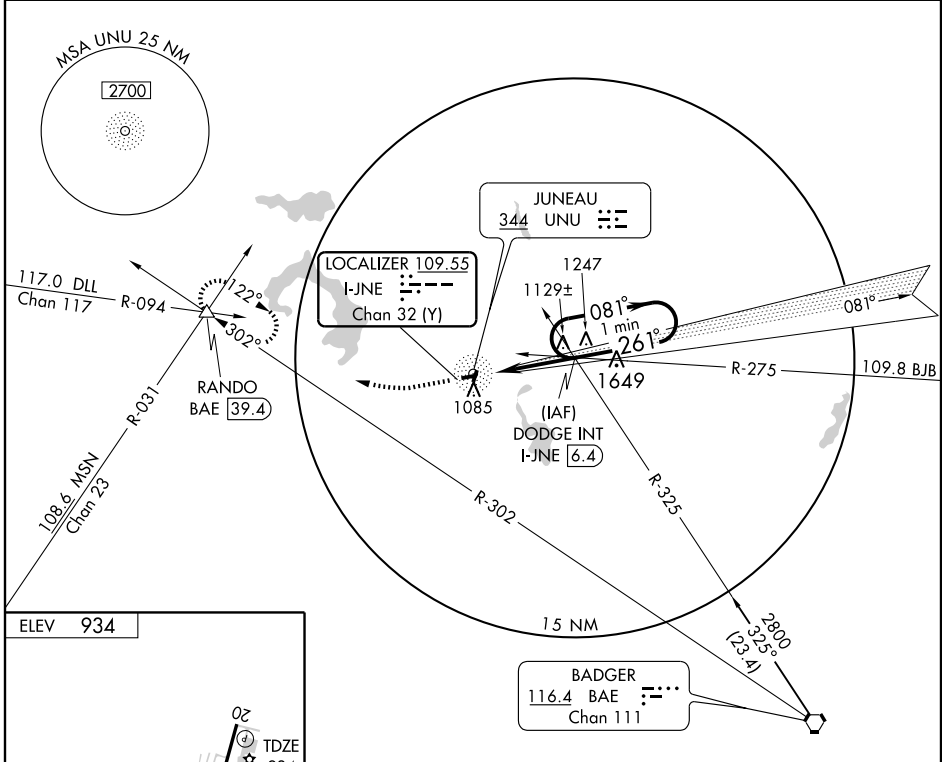
# LOC RWY 26

JUNEAU/ DODGE COUNTY (UNU)

**⚠** If local altimeter setting not received, use Dane County Rgnl-Truax Field altimeter setting and increase all MDAs 100 feet. Inoperative table does not apply. Visibility reduction by helicopters NA.

**MALSF** MISSED APPROACH: Climb to 2800 then climbing right turn to 3000 via BAE VORTAC R-302 to RANDO Int/BAE 39.4 DME and hold.

AWOS-3 <b>119.075</b>	MADISON APP CON <b>119.15 343.7</b>	GCO <b>121.725</b>	UNICOM <b>122.7 (CTAF)</b> <b>0</b>
--------------------------	--	-----------------------	--



REIL Rws 2 and 20 **0**

MIRL Rws 8-26 and 2-20 **0**

FAF to MAP 5.4 NM

Knots	60	90	120	150	180
Min:Sec	5:24	3:36	2:42	2:10	1:48

CATEGORY	A	B	C	D
S-26	1380-1	446 (500-1)	1380-1¼ 446 (500-1¼)	NA
CIRCLING	1440-1	506 (600-1)	1440-1½ 506 (600-1½)	NA

EC-3, 22 OCT 2009 to 19 NOV 2009

EC-3, 22 OCT 2009 to 19 NOV 2009