

VOR RWY 15

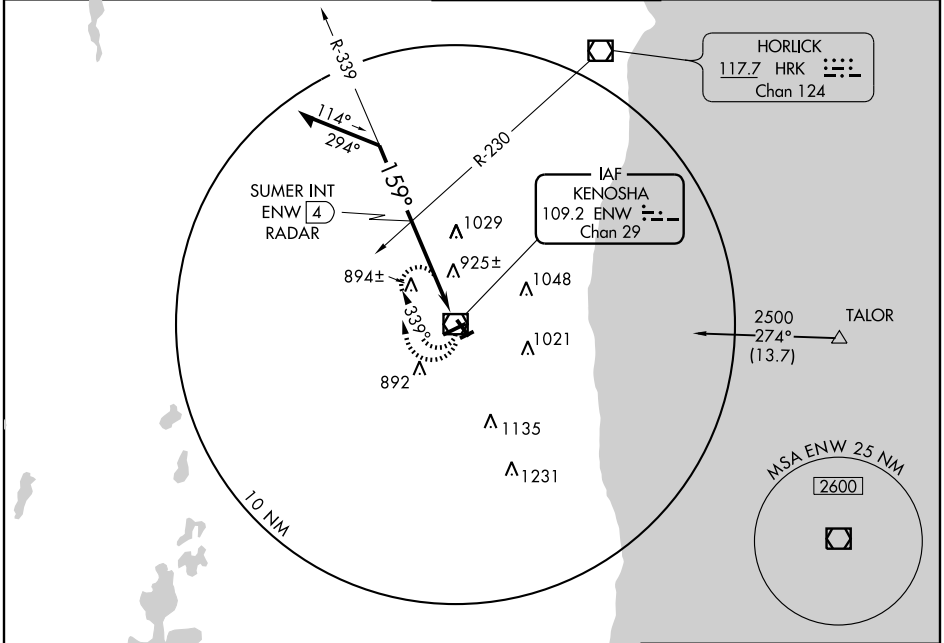
KENOSHA RGNL (ENW)

VOR/DME ENW 109.2 Chan 29	APP CRS 159°	Rwy Idg 4440 TDZE 721 Apt Elev 742
---	------------------------	---

▼ Visibility reduction by helicopters NA.
▲ When local altimeter setting not received, use Waukegan Rgnl altimeter setting and increase all MDA 40 feet and increase S-15 Cats C/D visibility 1/4 mile.

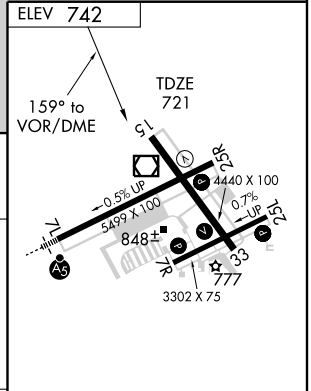
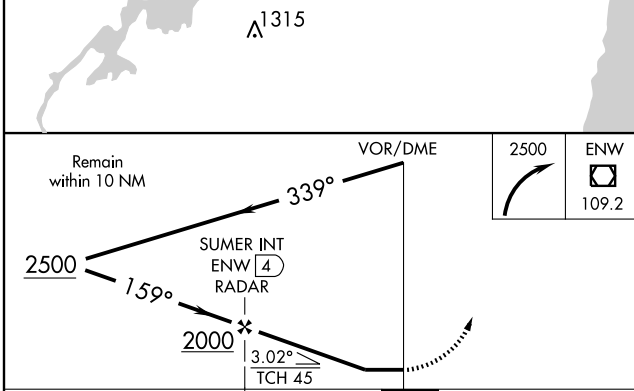
MISSED APPROACH: Climbing right turn to 2500 in ENW VOR/DME holding pattern, continue climb-in-hold to 2500.

ATIS 127.175	MILWAUKEE APP CON 120.15 (SOUTH) 317.725	KENOSHA TOWER ★ 118.6 (CTAF) 0 353.6	GND CON 121.875	UNICOM 122.95
------------------------	---	--	---------------------------	-------------------------



EC-3, 22 OCT 2009 to 19 NOV 2009

EC-3, 22 OCT 2009 to 19 NOV 2009



CATEGORY	A	B	C	D
S-15	1200-1 479 (500-1)		1200-1 1/4 479 (500-1 1/4)	1200-1 1/2 479 (500-1 1/2)
CIRCLING	1200-1 458 (500-1)		1200-1 1/2 458 (500-1 1/2)	1340-2 598 (600-2)

HIRL Rwy 7L-25R and 15-33
 REIL Rwy 15 and 25R
 MIRL Rwy 7R-25L