


RNAV (GPS) RWY 7L

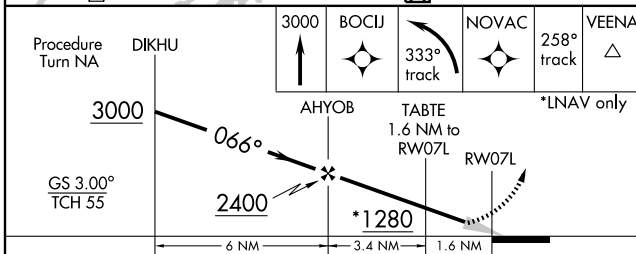
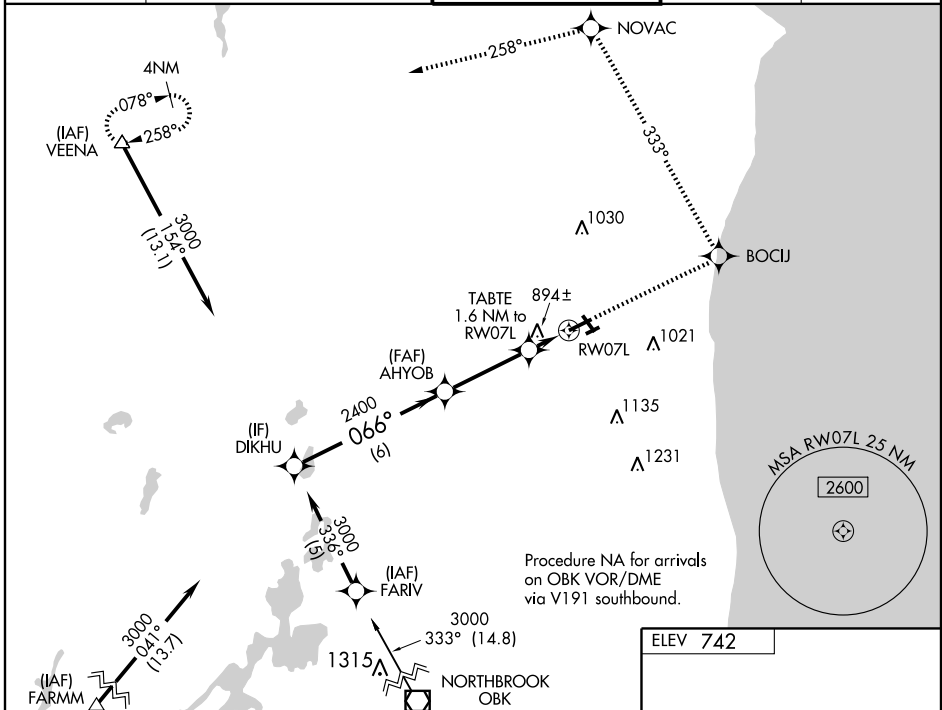
KENOSHA RGNL (E,N,W)

WAAS CH 50314 W07A	APP CRS 066°	Rwy Idg 5499 TDZE 742 Apt Elev 742
--	------------------------	---

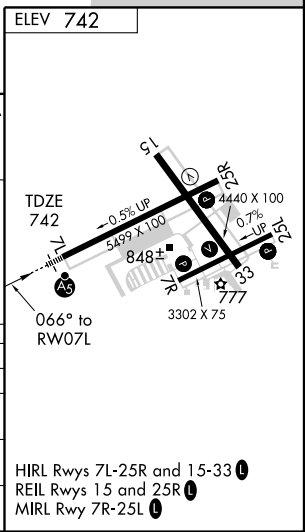
▼ For inoperative MALSR, increase LNAV Cat D visibility to 1½ mile.
▲ Baro-VNAV NA when using Waukegan Rgnl altimeter setting. For uncompensated Baro-VNAV systems, LNAV/VNAV NA below -1.6°C (4°F) or above 47°C (116°F).
 DME/DME RNP-0.3 NA. When local altimeter setting not received, use Waukegan Rgnl altimeter setting and increase all DA 27 feet and all MDA 40 feet.

MALSR

MISSED APPROACH:
 Climb to 3000 direct BOCIJ and left turn via track 333° to NOVAC and via track 258° to VEENA and hold.

ATIS 127.175	MILWAUKEE APP CON 120.15 (SOUTH) 317.725	KENOSHA TOWER ★ 118.6 (CTAF) 0 353.6	GND CON 121.875	UNICOM 122.95
------------------------	--	--	---------------------------	-------------------------



CATEGORY	A	B	C	D
LPV DA	942-½		200 (200-½)	
LNAV/VNAV DA	1179-1		437 (500-1)	
LNAV MDA	1160-½	418 (500-½)	1160-¾ 418 (500-¾)	1160-1 418 (500-1)
CIRCLING	1200-1	458 (500-1)	1200-1½ 458 (500-1½)	1340-2 598 (600-2)



EC-3, 22 OCT 2009 to 19 NOV 2009

EC-3, 22 OCT 2009 to 19 NOV 2009

HIRL Rwy 7L-25R and 15-33
 REIL Rwy 15 and 25R
 MIRL Rwy 7R-25L