

# RNAV (GPS) RWY 25R

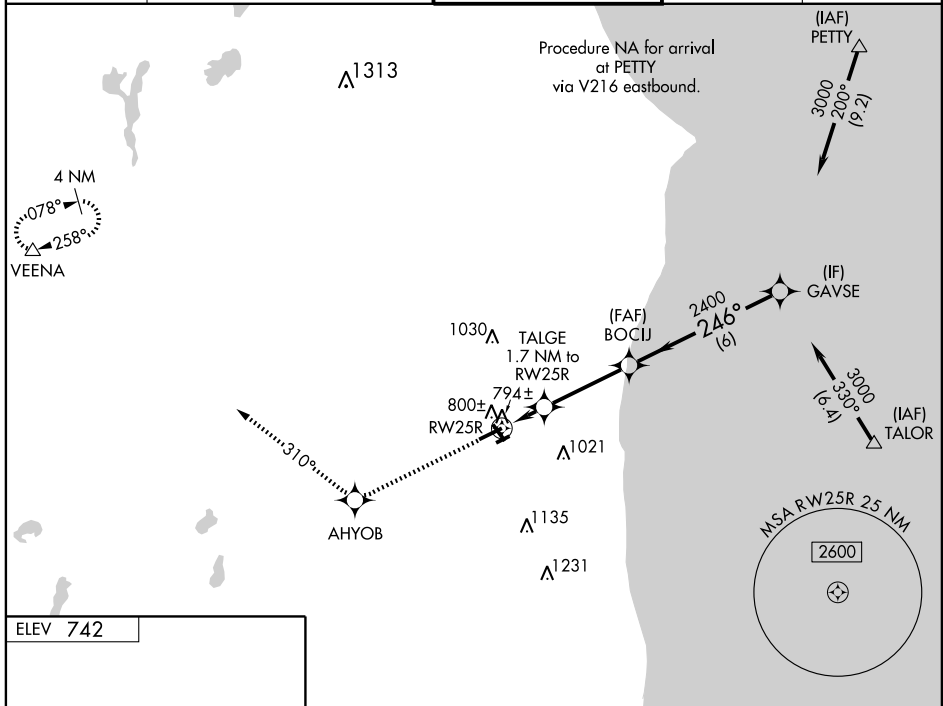
KENOSHA RGNL (ENW)

WAAS CH <b>49014</b> <b>W25A</b>	APP CRS <b>246°</b>	Rwy Idg TDZE <b>732</b> Apt Elev <b>742</b>	<b>5499</b>
--	------------------------	---	-------------

**⚠** Baro-VNAV NA when using Waukegan Rgnl altimeter setting. For uncompensated Baro-VNAV systems, LNAV/VNAV NA below -16°C (4°F) or above 47°C (116°F). DME/DME RNP-0.3 NA. Visibility reduction by helicopters NA. When local altimeter setting not received, use Waukegan Rgnl altimeter setting and increase all DA 27 feet and all MDA 40 feet and increase LNAV Cat C visibility ¼ mile.

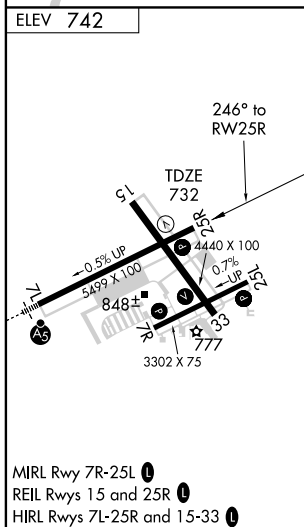
**⚠** MISSED APPROACH: Climb to 3000 direct AHYOB and via track 310° to VEENA and hold.

ATIS <b>127.175</b>	MILWAUKEE APP CON <b>120.15 (SOUTH) 317.725</b>	<b>KENOSHA TOWER ★</b> <b>118.6 (CTAF) 0 353.6</b>	GND CON <b>121.875</b>	UNICOM <b>122.95</b>
------------------------	--	---	---------------------------	-------------------------



EC-3, 22 OCT 2009 to 19 NOV 2009

EC-3, 22 OCT 2009 to 19 NOV 2009



3000	AHYOB	310° track	VEENA	GAVSE
↑	◆		△	
*LNAV only				
RW25R		TALGE 1.7 NM to RW25R	BOCIJ	3000
1.7		3.4 NM	2400	246°
*1280		Procedure Turn NA GS 3.00° TCH 45		
CATEGORY	A	B	C	D
LPV DA	982-1		250 (300-1)	
LNAV/VNAV DA	1064-1¼		332 (400-1¼)	
LNAV MDA	1100-1		368 (400-1)	
			1100-1¼ 368 (400-1¼)	
CIRCLING	1200-1 458 (500-1)		1200-1½ 458 (500-1½) 1340-2 598 (600-2)	

# RNAV (GPS) RWY 25R