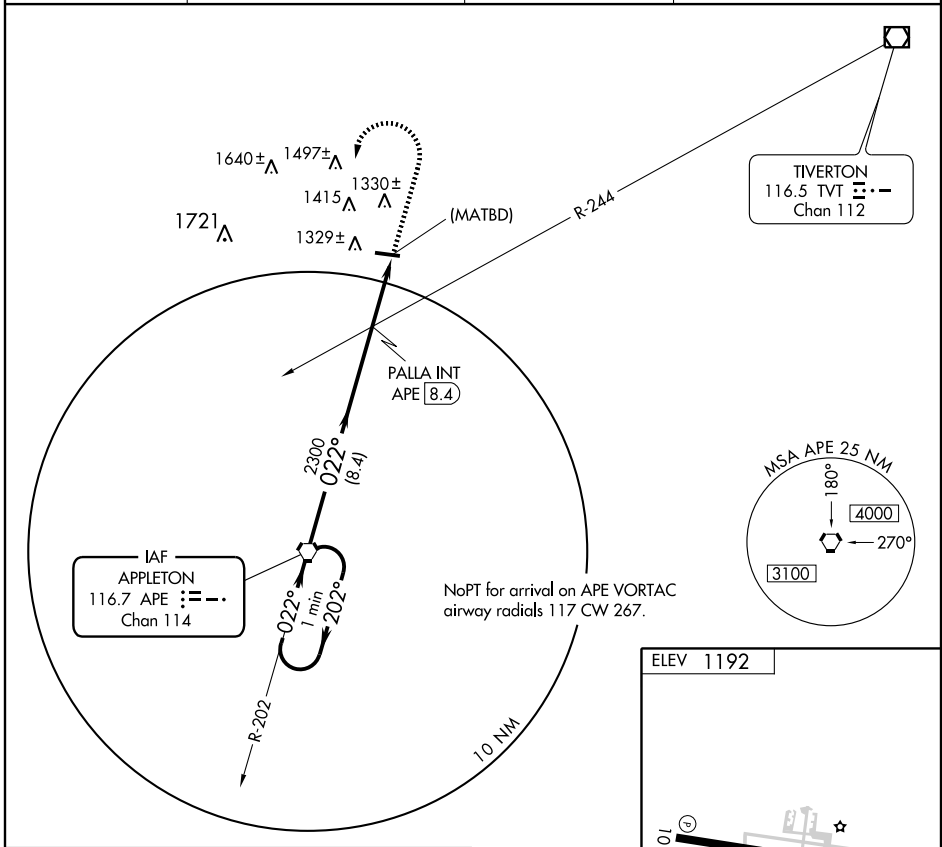


# VOR or GPS-A

MOUNT VERNON / KNOX COUNTY (4I3)

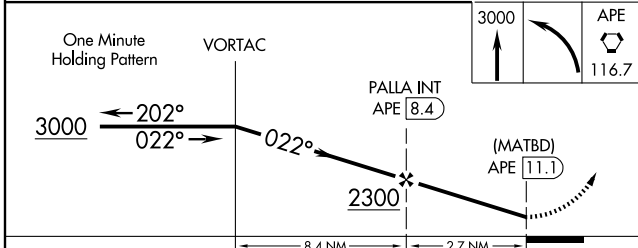
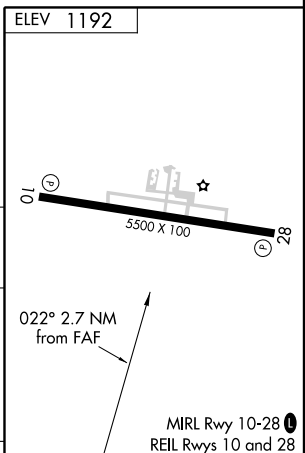
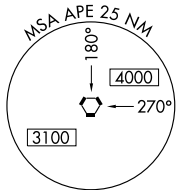
VORTAC APE <b>116.7</b> Chan <b>114</b>	APP CRS <b>022°</b>	Rwy Idg TDZE Apt Elev <b>1192</b>	N/A N/A N/A
---	------------------------	---	-------------------

<p>▼ ▲ NA</p>		<p>MISSED APPROACH: Climb to 3000 then left turn direct APE VORTAC and hold.</p>	
AWOS-3 <b>120.125</b>	COLUMBUS APP CON <b>120.2 317.775</b>	CLNC DEL <b>119.45</b>	UNICOM <b>123.05 (CTAF) 0</b>



EC-2, 22 OCT 2009 to 19 NOV 2009

EC-2, 22 OCT 2009 to 19 NOV 2009



CATEGORY	A	B	C	D	FAF to MAP 2.7 NM					
CIRCLING	1660-1	468 (500-1)	1660-1½ 468 (500-1½)	1760-2 568 (600-2)	Knots	60	90	120	150	180
					Min:Sec	2:42	1:48	1:21	1:05	0:54