

LAPEER, MICHIGAN

AL-5446 (FAA)

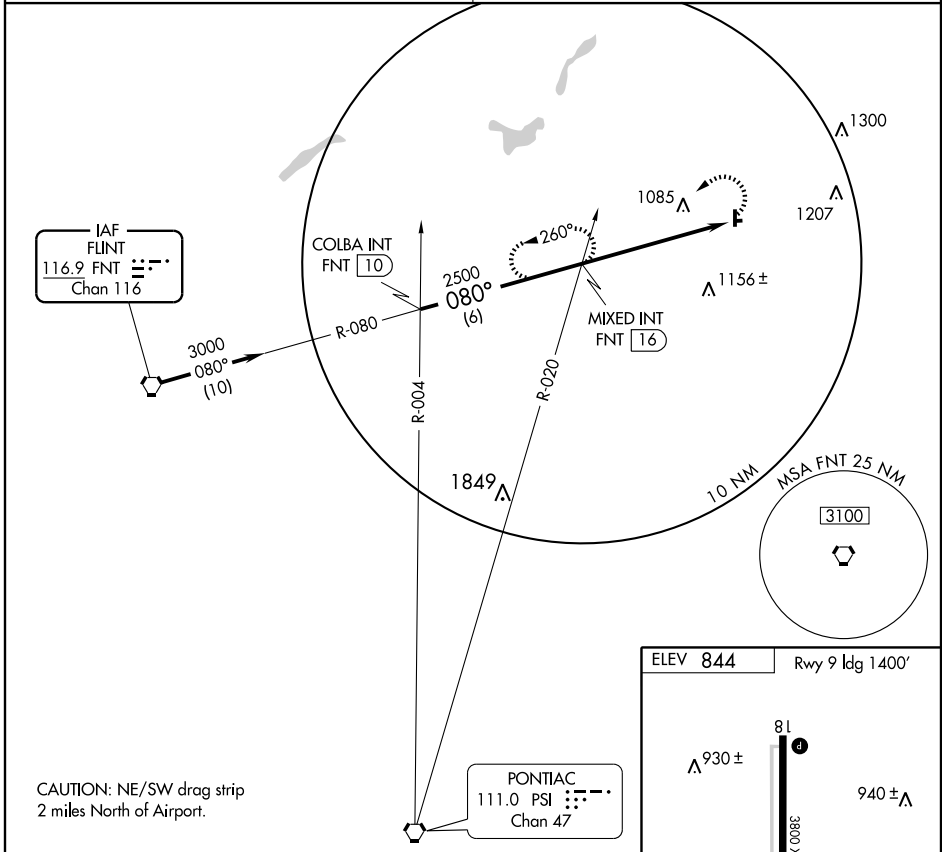
VOR-A

LAPEER/ DUPONT-LAPEER (D95)

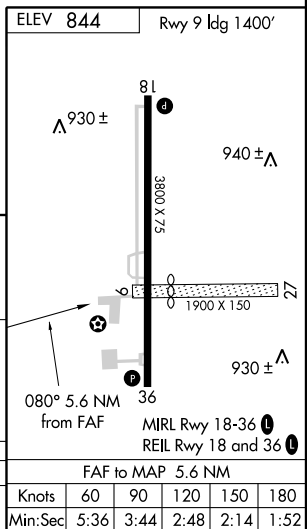
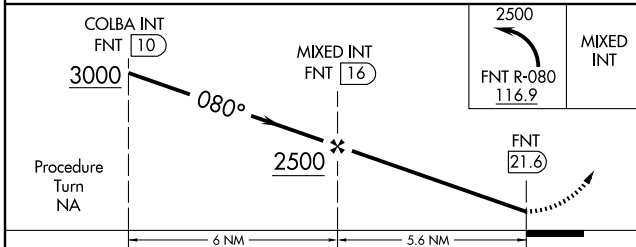
VORTAC FNT <b>116.9</b>	APP CRS <b>080°</b>	Rwy ldg TDZE Apt Elev	<b>N/A</b> <b>N/A</b> <b>844</b>
Chan <b>116</b>			

▼ Use Flint altimeter setting.  
 ▲ NA MISSED APPROACH: Climbing left turn to 2500 via FNT R-080 to MIXED INT/FNT 16 DME and hold.

FLINT APP CON ★ **118.8 257.9** UNICOM **123.0** (CTAF) **0**



CAUTION: NE/SW drag strip 2 miles North of Airport.



CATEGORY	A	B	C	D
CIRCLING	1460-1 616 (700-1)	1460-1¼ 616 (700-1¼)	1460-1¾ 616 (700-1¾)	NA

FAF to MAP 5.6 NM					
Knots	60	90	120	150	180
Min:Sec	5:36	3:44	2:48	2:14	1:52

LAPEER, MICHIGAN  
Orig 07242

43°04'N - 83°16'W

LAPEER/ DUPONT-LAPEER (D95)

VOR-A

EC-1, 22 OCT 2009 to 19 NOV 2009

EC-1, 22 OCT 2009 to 19 NOV 2009