

PORT HURON, MICHIGAN

AL-5445 (FAA)

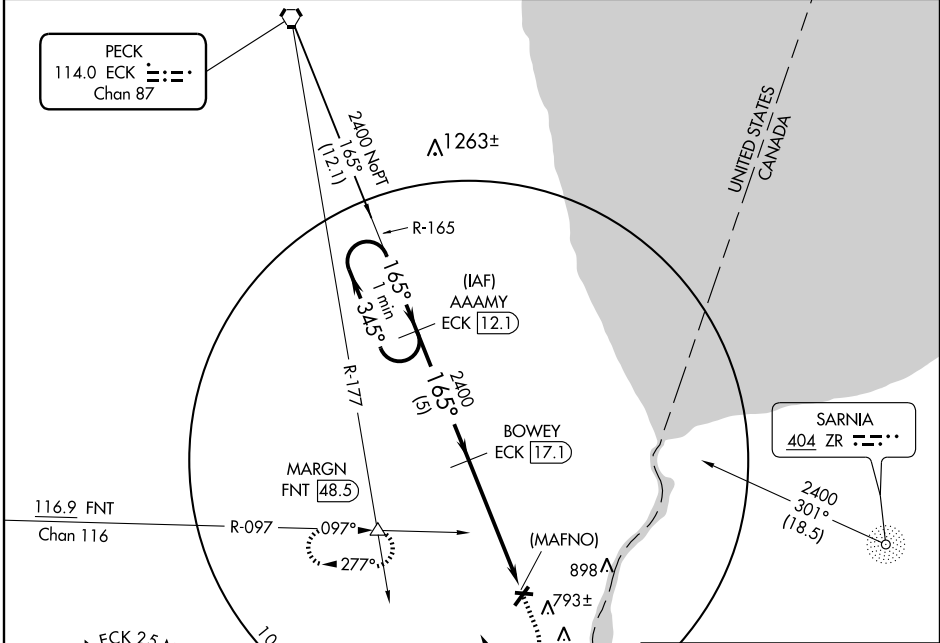
VORTAC ECK 114.0 Chan 87	APP CRS 165°	Rwy ldg TDZE Apt Elev 650	N/A N/A 650
--	------------------------	---	--

VOR/DME or GPS-A

PORT HURON / ST. CLAIR COUNTY INTL (PHN)

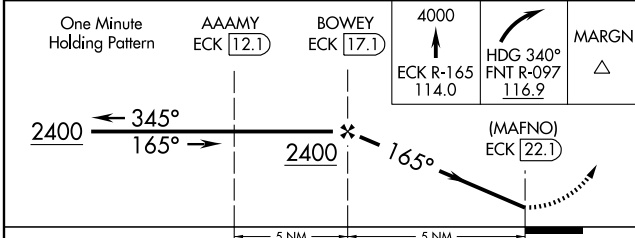
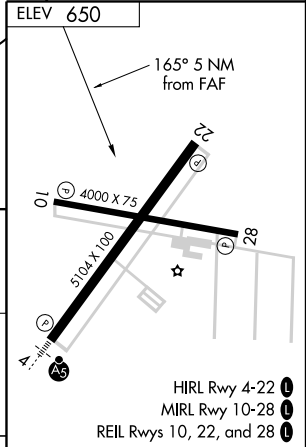
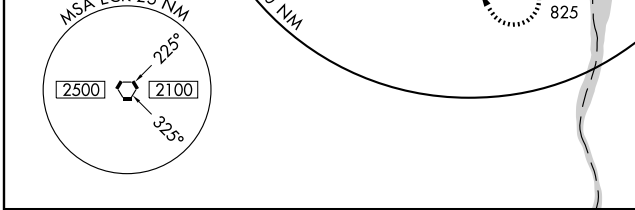
MISSED APPROACH: Climb to 4000 via ECK R-165 then right turn heading 340° and FNT VORTAC R-097 to MARGN Int/FNT 48.5 DME and hold.

AWOS-3 118.375	SELRIDGE APP CON * 119.6 395.9	UNICOM 123.05 (CTAF)
--------------------------	--	--------------------------------



EC-1, 22 OCT 2009 to 19 NOV 2009

EC-1, 22 OCT 2009 to 19 NOV 2009



CATEGORY	A	B	C	D	Knots	60	90	120	150	180
CIRCLING	1140-1 490 (500-1)	1140-1 ¼ 490 (500-1 ¼)	1140-1 ½ 490 (500-1 ½)	1200-2 550 (600-2)	Min:Sec					

PORT HURON, MICHIGAN
Amdt 7A 09071

PORT HURON / ST. CLAIR COUNTY INTL (PHN)
42°55'N - 82°32'W
VOR/DME or GPS-A