

PORT HURON, MICHIGAN

AL-5445 (FAA)

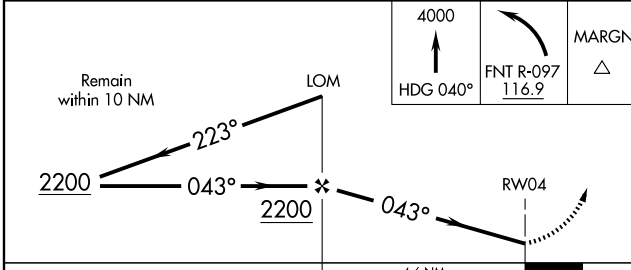
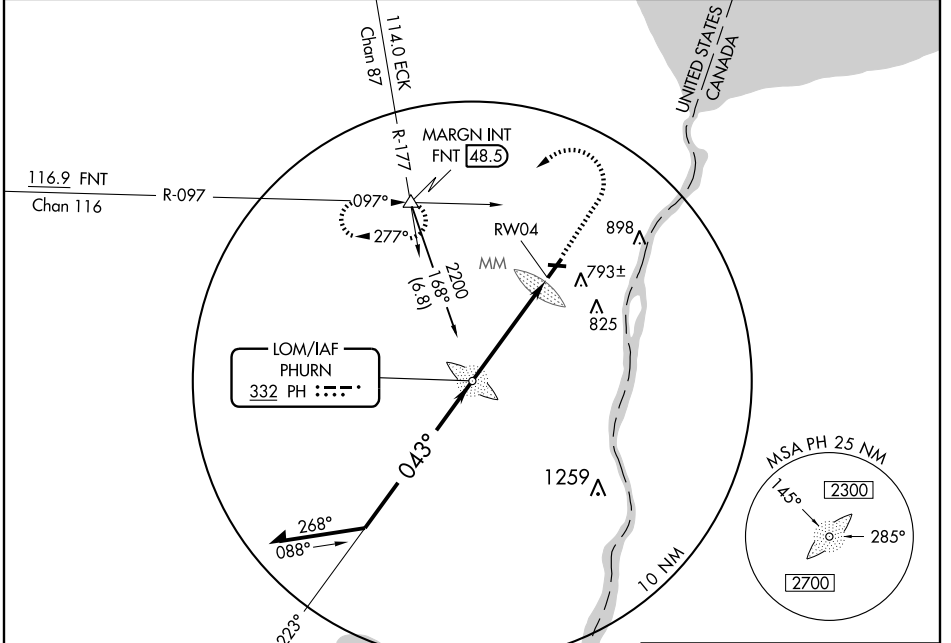
# NDB or GPS RWY 4

PORT HURON / ST. CLAIR COUNTY INTL (PHN)

LOM PH <b>332</b>	APP CRS <b>043°</b>	Rwy Idg TDZE Apt Elev	<b>5104</b> <b>648</b> <b>650</b>
----------------------	------------------------	-----------------------------	---

		MISSED APPROACH: Climb to 4000 via heading 040° then left turn via FNT VORTAC R-097 to MARGN Int/FNT 48.5 DME and hold.
--	--	---

AWOS-3 <b>118.375</b>	SELRIDGE APP CON ★ <b>119.6 395.9</b>	UNICOM <b>123.05 (CTAF)</b>
--------------------------	--	--------------------------------



CATEGORY	A	B	C	D
S-4	1180-¾ 532 (600-¾)		1180-1 532 (600-1)	1180-1½ 530 (600-1½)
CIRCLING	1180-1 530 (600-1)		1180-1½ 530 (600-1½)	1200-2 550 (600-2)

FAF to MAP 4.6 NM					
Knots	60	90	120	150	180
Min:Sec	4:36	3:04	2:18	1:50	1:32

HIRL Rwy 4-22

MIRL Rwy 10-28

REIL Rws 10, 22, and 28

PORT HURON, MICHIGAN  
Amdt 3A 09071

PORT HURON / ST. CLAIR COUNTY INTL (PHN)  
42°55'N - 82°32'W

# NDB or GPS RWY 4

EC-1, 22 OCT 2009 to 19 NOV 2009

EC-1, 22 OCT 2009 to 19 NOV 2009