

PORT HURON, MICHIGAN

AL-5445 (FAA)

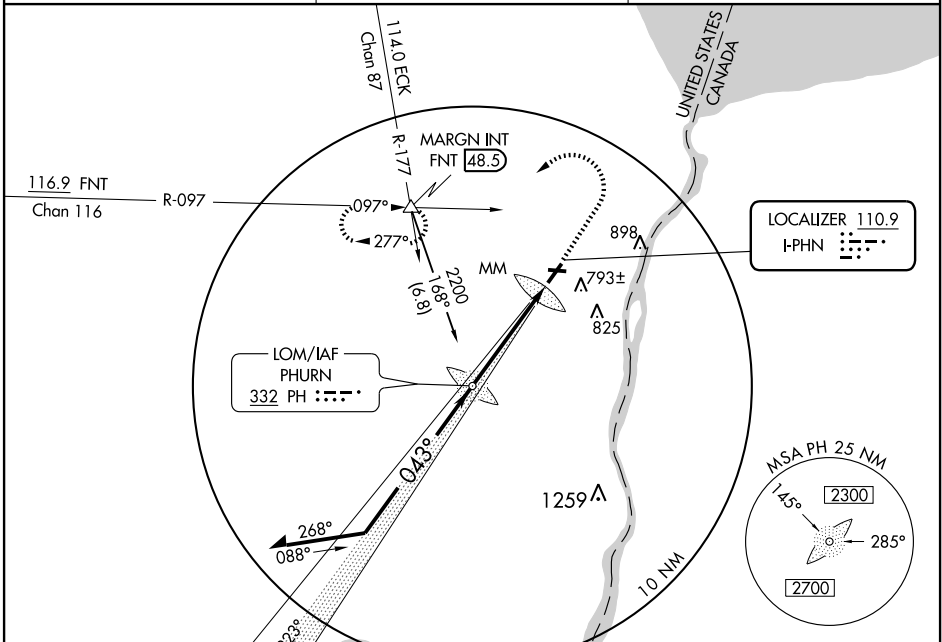
ILS RWY 4

PORT HURON / ST. CLAIR COUNTY INTL (PHN)

LOC I-PHN 110.9	APP CRS 043°	Rwy Idg 5104
		TDZE 648
		Apt Elev 650

		MISSED APPROACH: Climb to 4000 via heading 040° then left turn via FNT VORTAC R-097 to MARGN Int/FNT 48.5 DME and hold.
--	--	--

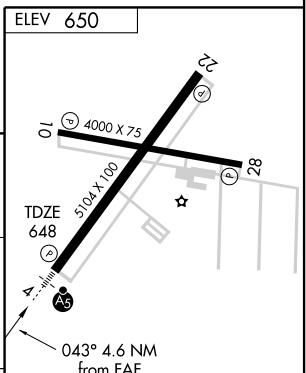
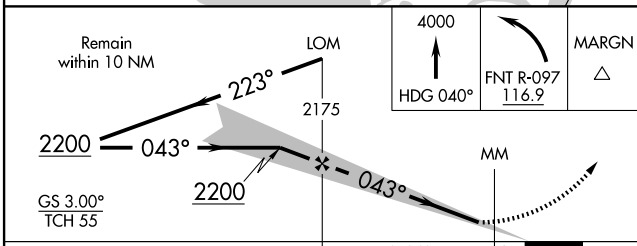
AWOS-3 118.375	SELRIDGE APP CON * 119.6 395.9	UNICOM 123.05 (CTAF)
--------------------------	--	--------------------------------



EC-1, 22 OCT 2009 to 19 NOV 2009

EC-1, 22 OCT 2009 to 19 NOV 2009

ADF REQUIRED



CATEGORY	A	B	C	D
S-ILS 4	848-1/2 200 (200-1/2)			
S-LOC 4	1140-1/2 492 (500-1/2)		1140-3/4 492 (500-3/4)	1140-2 492 (500-2)
CIRCLING	1140-1 490 (500-1)		1140-1 1/2 490 (500-1 1/2)	1200-2 550 (600-2)

HIRL Rwy 4-22
MIRL Rwy 10-28
REIL Rws 10, 22, and 28
FAF to MAP 4.6 NM
Knots: 60 90 120 150 180
Min:Sec: 4:36 3:04 2:18 1:50 1:32

PORT HURON, MICHIGAN
Amdt 3A 09071

PORT HURON / ST. CLAIR COUNTY INTL (PHN)

42°55'N - 82°32'W

ILS RWY 4