

MARFA, TEXAS

AL-5443 (FAA)

VOR/DME MRF <b>115.9</b> Chan <b>106</b>	APP CRS <b>313°</b>	Rwy Idg <b>6214</b> TDZE <b>4840</b> Apt Elev <b>4849</b>
--	------------------------	---

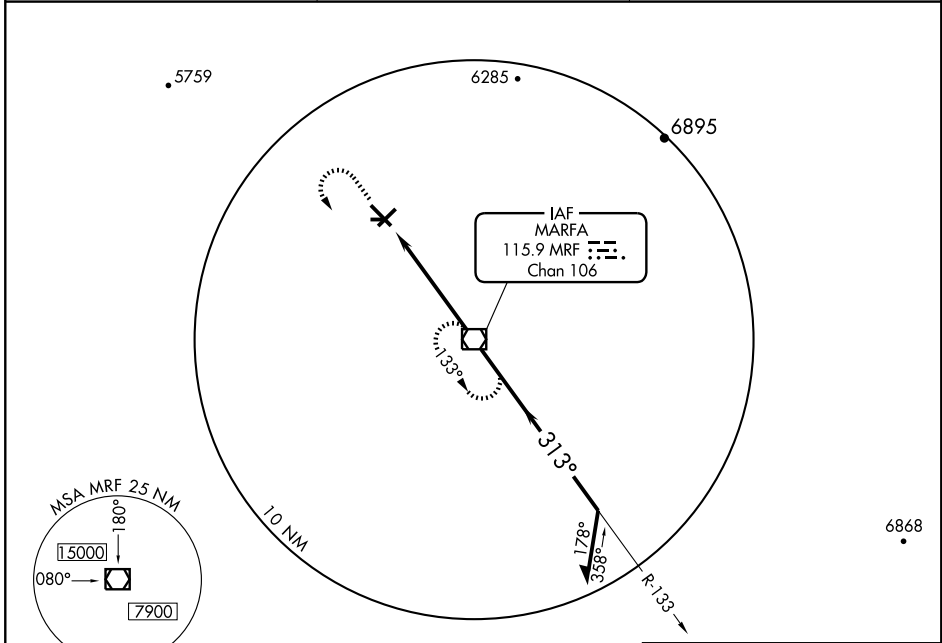
# VOR RWY 30

MARFA MUNI (MRF)

**▽** If local altimeter setting not received, procedure not authorized. **▲ NA**

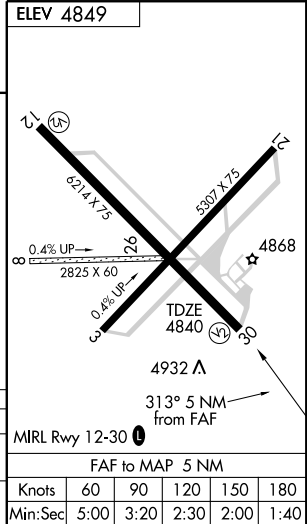
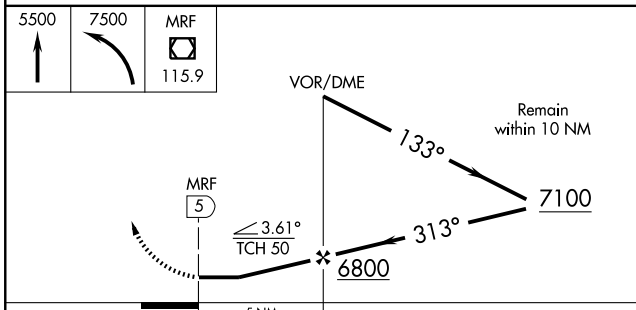
MISSED APPROACH: Climb to 5500 then climbing left turn to 7500 direct MRF VOR/DME and hold.

AWOS-3 <b>134.025</b>	ALBUQUERQUE CENTER <b>135.875 292.15</b>	UNICOM <b>122.8 (CTAF) ①</b>
--------------------------	---	---------------------------------



SC-3, 22 OCT 2009 to 19 NOV 2009

SC-3, 22 OCT 2009 to 19 NOV 2009



CATEGORY	A	B	C	D
S-30	5200-1	360 (400-1)		5200-1¼ 360 (400-1¼)
CIRCLING	5260-1 411 (500-1)	5300-1 451 (500-1)	5300-1½ 451 (500-1½)	5400-2 551 (600-2)

MARFA, TEXAS  
Amdt 5A 08213

30°22'N-104°01'W

# MARFA MUNI (MRF)

## VOR RWY 30

MIRL Rwy 12-30 ①	FAF to MAP 5 NM				
Knots	60	90	120	150	180
Min:Sec	5:00	3:20	2:30	2:00	1:40