

# RNAV (GPS) RWY 25

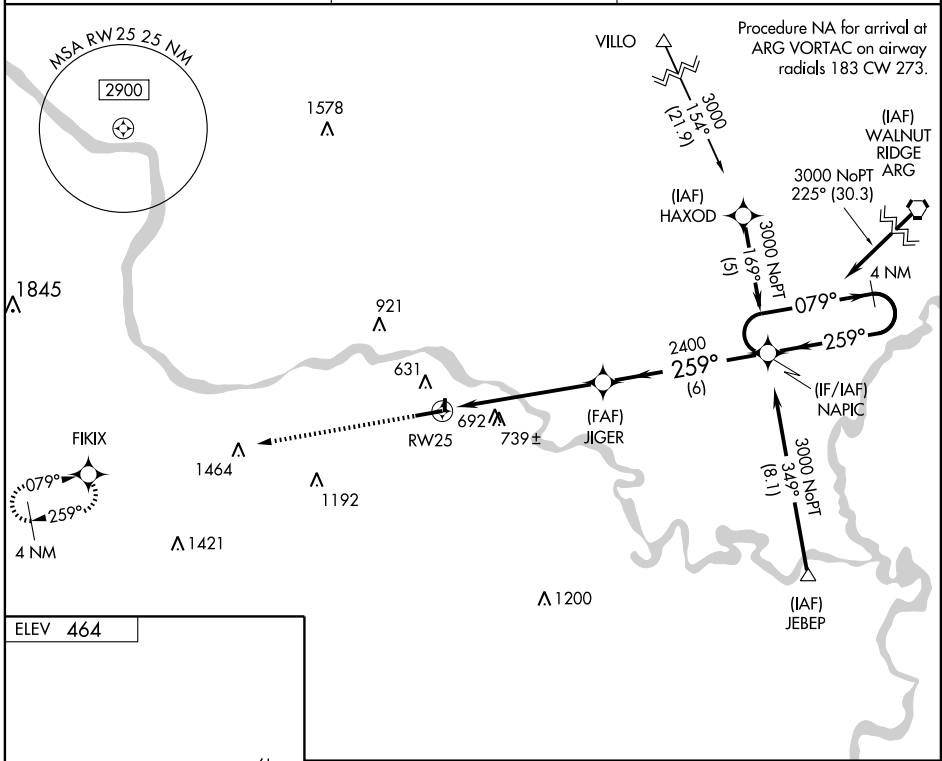
BATESVILLE RGNL (BVX)

APP CRS <b>259°</b>	Rwy Idg TDZE Apt Elev	<b>6002</b> <b>464</b> <b>464</b>
------------------------	-----------------------------	---

▼ If local altimeter setting not received, use Searcy Muni altimeter setting and increase all MDAs 100 feet. VDP NA with Searcy Muni altimeter setting.  
 ▲ Circling NA northwest of Rwy 7-25. Circling to Rwy 17-35 NA at night. Straight-in minimums NA at night. DME/DME RNP-0.3 NA.

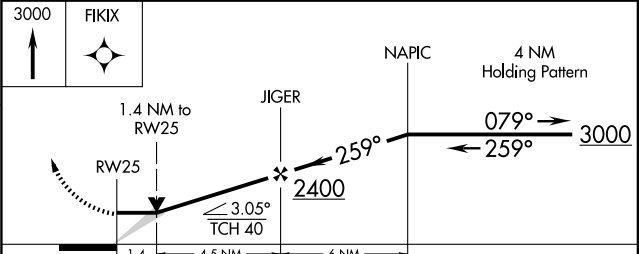
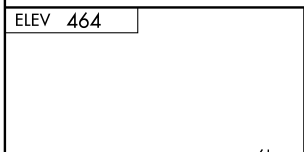
MISSED APPROACH: Climb to 3000 direct FIKIX and hold.

AWOS-3 <b>126.375</b>	MEMPHIS CENTER <b>126.85 281.55</b>	UNICOM <b>122.8</b> (CTAF) <b>0</b>
--------------------------	--	--



SC-1, 22 OCT 2009 to 19 NOV 2009

SC-1, 22 OCT 2009 to 19 NOV 2009



CATEGORY	A	B	C	D
LNAV MDA	940-1	476 (500-1)	940-1¼ 476 (500-1¼)	940-1½ 476 (500-1½)
CIRCLING	980-1	516 (600-1)	980-1½ 516 (600-1½)	1040-2 576 (600-2)