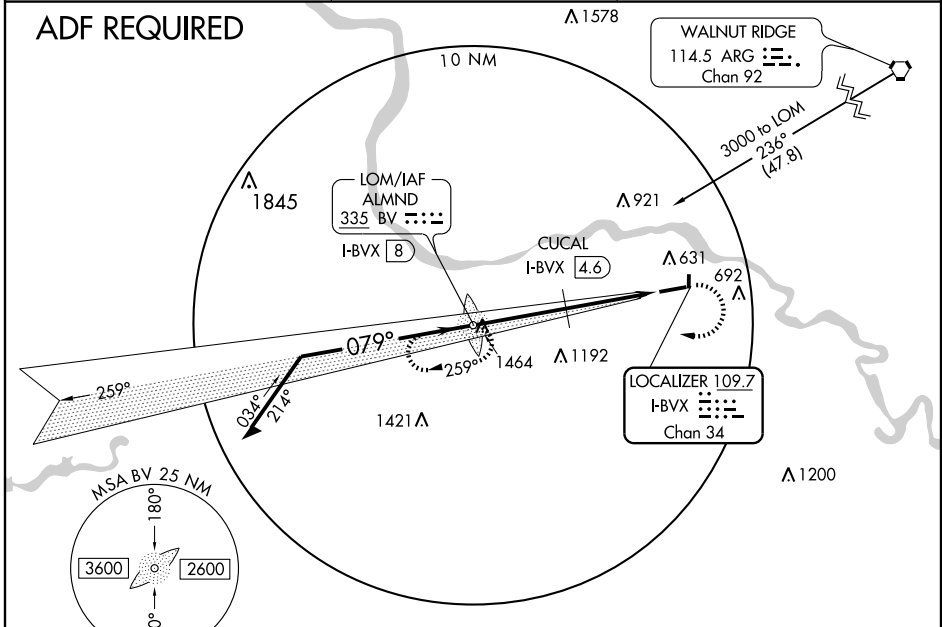


LOC/DME I-BVX <b>109.7</b> Chan <b>34</b>	APP CRS <b>079°</b>	Rwy Idg <b>6002</b> TDZE <b>463</b> Apt Elev <b>464</b>
---	------------------------	---

**LOC RWY 7**  
BATESVILLE RGNL (BVX)

<p><b>▽</b> If local altimeter setting not received, use Searcy Muni altimeter setting and increase all MDAs 100 feet. VDP NA with Searcy Muni altimeter setting. Circling NA northwest of Rwys 7 and 25. Circling to Rwy 17-35 NA at night. Inoperative table does not apply to S-LOC 7 all Cats and CUCAL fix minimums S-LOC 7 Cat C. ADF Required.</p> <p><b>▲ NA</b></p>	<p>MALS <b>(A)</b></p>	<p><b>MISSED APPROACH:</b> Climbing right turn to 3000 direct ALMND LOM and hold.</p>
--	----------------------------	---

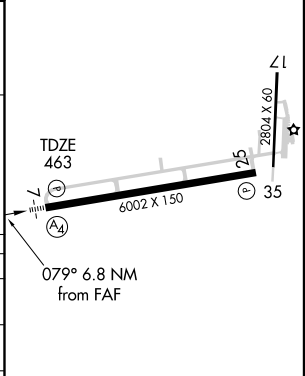
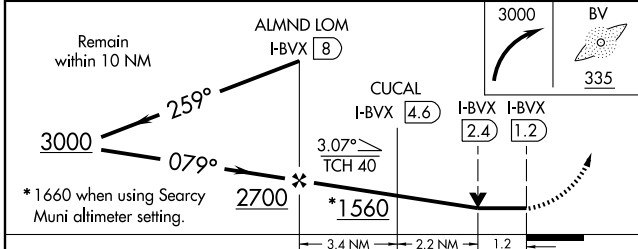
AWOS-3 <b>126.375</b>	MEMPHIS CENTER <b>126.85 281.55</b>	UNICOM <b>122.8 (CTAF)</b>
--------------------------	--	-------------------------------



SC-1, 22 OCT 2009 to 19 NOV 2009

SC-1, 22 OCT 2009 to 19 NOV 2009

ELEV 464
----------



CATEGORY	A	B	C	D
S-LOC 7	1560-1¼ 1097 (1100-1¼)	1560-1½ 1097 (1100-1½)	1560-3	1097 (1100-3)
CIRCLING	1560-1¼ 1096 (1100-1¼)	1560-1½ 1096 (1100-1½)	1560-3	1096 (1100-3)
CUCAL FIX MINIMUMS				
S-LOC 7	880-¾	417 (500-¾)	880-1¼	417 (500-1¼)
CIRCLING	980-1	516 (600-1)	980-1½ 516 (600-1½)	1040-2 576 (600-2)

MIRL Rwy 7-25	
FAF to MAP 6.8 NM	
Knots	60 90 120 150 180
Min:Sec	6:48 4:32 3:24 2:43 2:16