

WACO, TEXAS

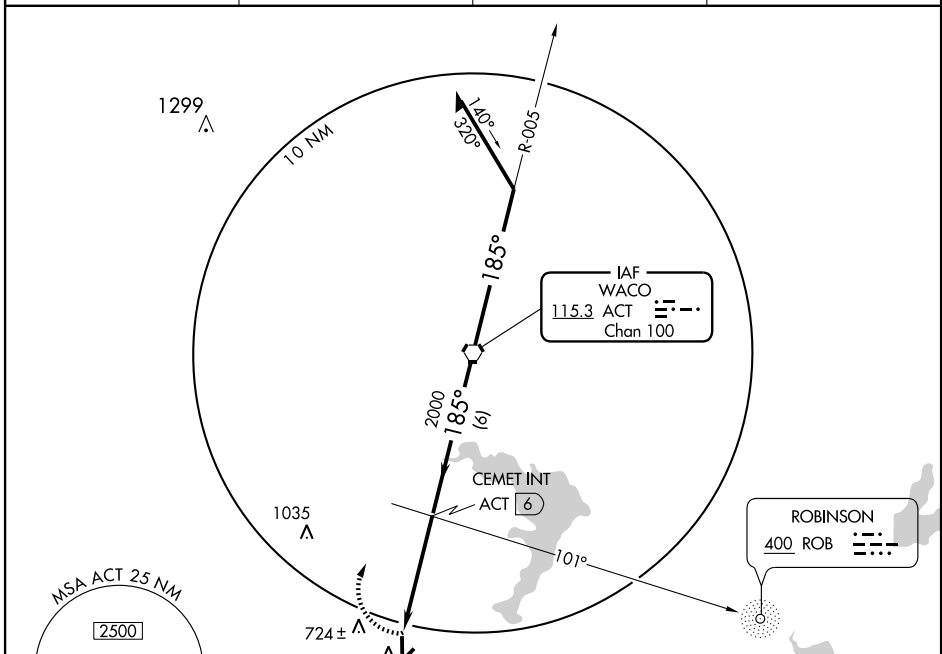
AL-5441 (FAA)

VOR RWY 17

WACO/MC GREGOR EXECUTIVE (PWG)

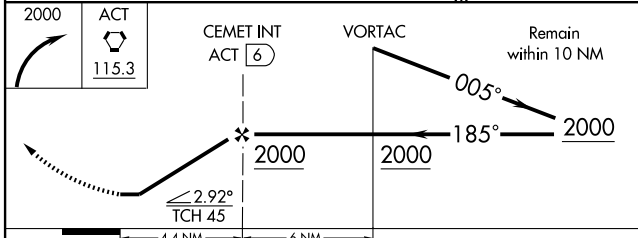
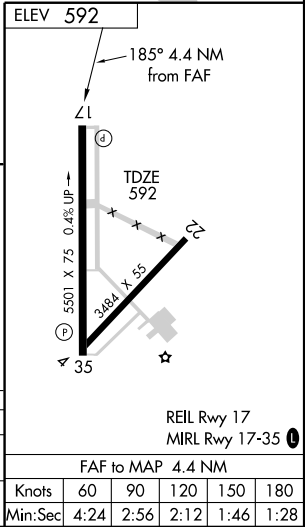
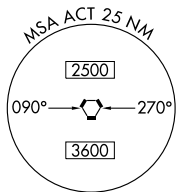
VORTAC ACT	APP CRS	Rwy Idg	5501
115.3	185°	TDZE	592
Chan 100		Apt Elev	592

DME or ADF required. ASR		MISSED APPROACH: Climbing right turn to 2000 direct ACT VORTAC.	
AWOS-3 135.525	WACO APP CON * 135.2 352.0	GCO 121.725	UNICOM 122.8 (CTAF) 0



SC-3, 22 OCT 2009 to 19 NOV 2009

SC-3, 22 OCT 2009 to 19 NOV 2009



CATEGORY	A	B	C	D
S-17	980-1 388 (400-1)			NA
CIRCLING	1040-1 448 (500-1)	1060-1 468 (500-1)	1060-1½ 468 (500-1½)	NA

WACO, TEXAS
Amdt 10C 09183

31°29'N-97°19'W

WACO/MC GREGOR EXECUTIVE (PWG)

VOR RWY 17