

HAYS, KANSAS

AL-5440 (FAA)

VOR/DME RWY 16

HAYS RGNL (HYS)

VORTAC HYS 110.4 Chan 41	APP CRS 170°	Rwy Idg TDZE Apt Elev	6500 1998 1998
---------------------------------------	------------------------	-----------------------------	---

MISSED APPROACH: Climb to 3800 via HYS R-152 then left turn direct HYS VORTAC and hold.

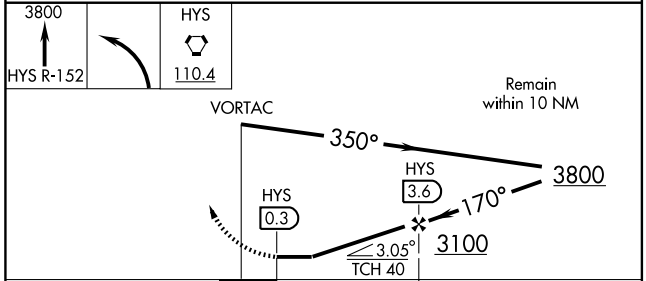
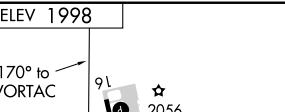
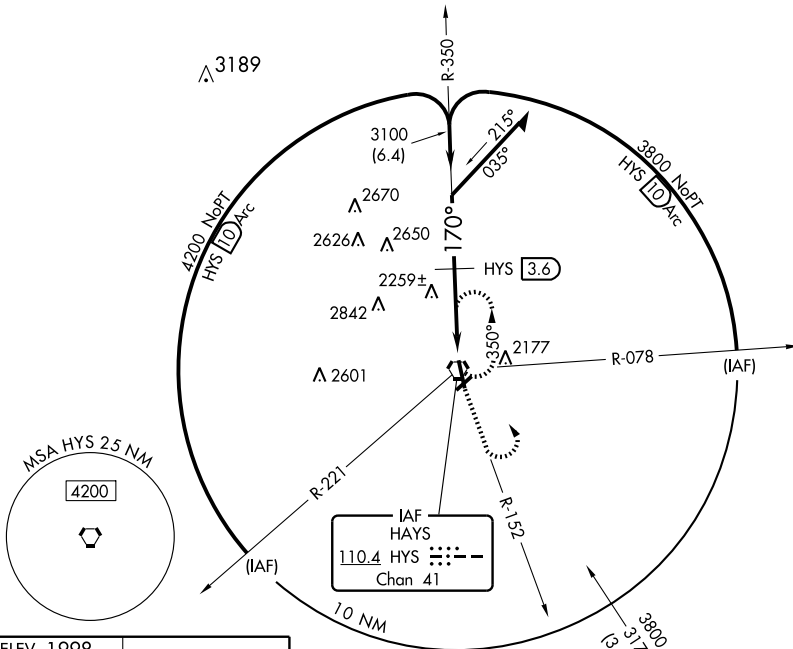
AWOS-3
125.525

KANSAS CITY CENTER
124.4 322.4

UNICOM
122.8 (CTAF) 1

NC-2, 22 OCT 2009 to 19 NOV 2009

NC-2, 22 OCT 2009 to 19 NOV 2009



CATEGORY	A	B	C	D
S-16	2520-1	522 (600-1)	2520-1½ 522 (600-1½)	2520-1¾ 522 (600-1¾)
CIRCLING	2520-1	522 (600-1)	2520-1½ 522 (600-1½)	2600-2 602 (700-2)

HAYS, KANSAS
Amdt 3D 09127

38°51' N-99°16' W

HAYS RGNL (HYS) VOR/DME RWY 16