

HAYS, KANSAS

AL-5440 (FAA)

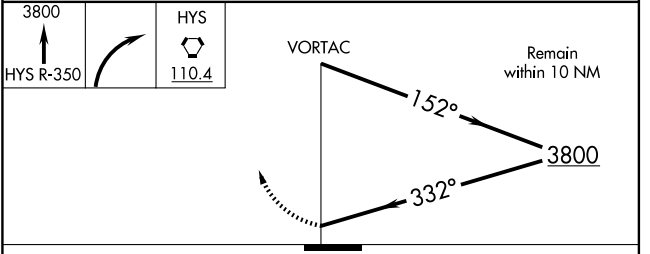
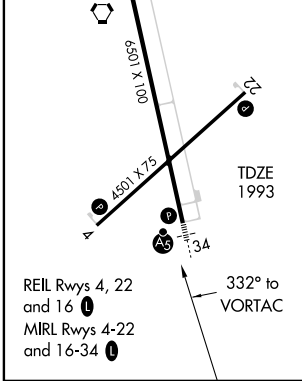
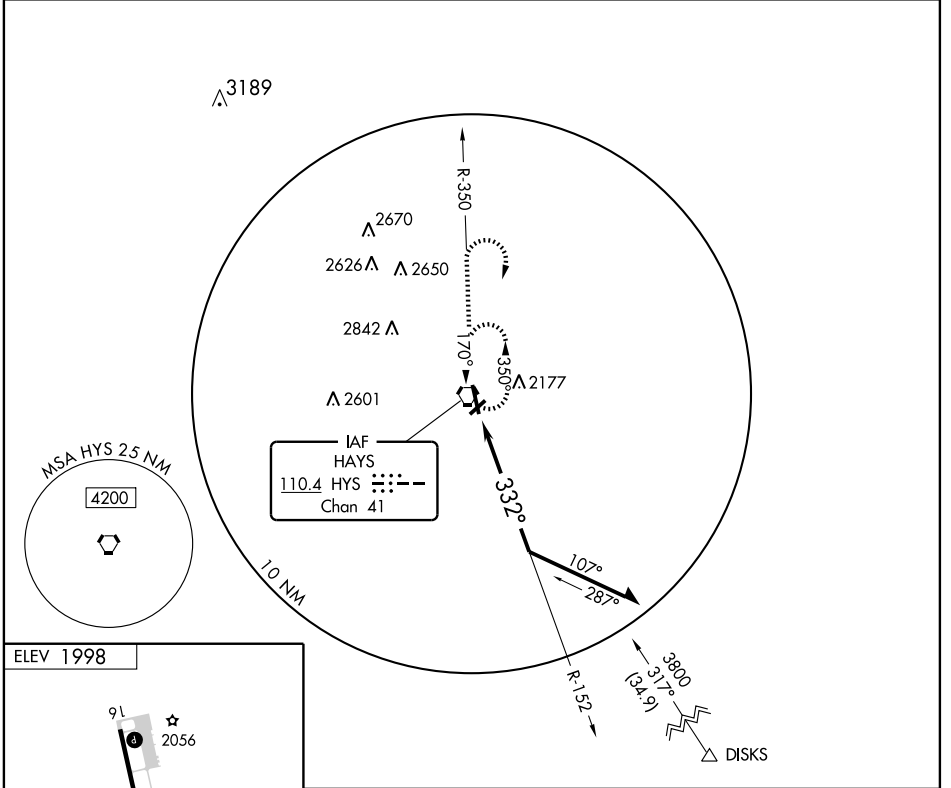
VORTAC HYS <b>110.4</b> Chan 41	APP CRS <b>332°</b>	Rwy Idg TDZE Apt Elev <b>6500</b> <b>1993</b> <b>1998</b>
---------------------------------------	------------------------	--

# VOR RWY 34

HAYS RGNL (HYS)

	MALS R 	MISSED APPROACH: Climb to 3800 via HYS R-350 then right turn direct HYS VORTAC and hold.
--	------------	--

AWOS-3 <b>125.525</b>	KANSAS CITY CENTER <b>124.4 322.4</b>	UNICOM <b>122.8 (CTAF) 0</b>
--------------------------	--	---------------------------------



CATEGORY	A	B	C	D
S-34	2480-1/2	487 (500-1/2)	2480-3/4 487 (500-3/4)	2480-1 487 (500-1)
CIRCLING	2480-1	482 (500-1)	2480-1 1/2 482 (500-1 1/2)	2600-2 602 (700-2)

HAYS, KANSAS  
Amdt 5B 09127

38° 51' N-99° 16' W

# HAYS RGNL (HYS) VOR RWY 34

NC-2, 22 OCT 2009 to 19 NOV 2009

NC-2, 22 OCT 2009 to 19 NOV 2009