

HAYS, KANSAS

AL-5440 (FAA)

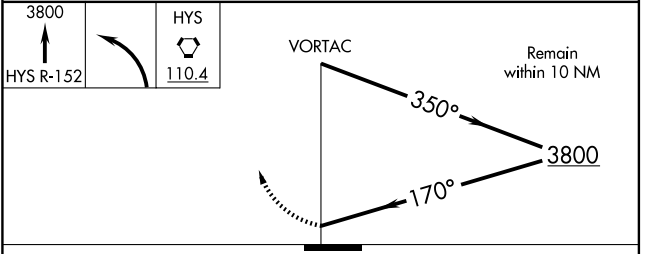
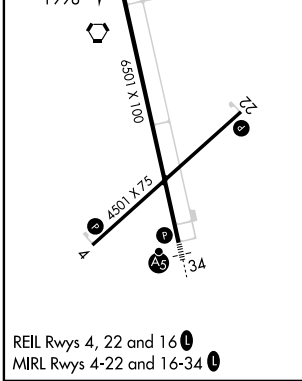
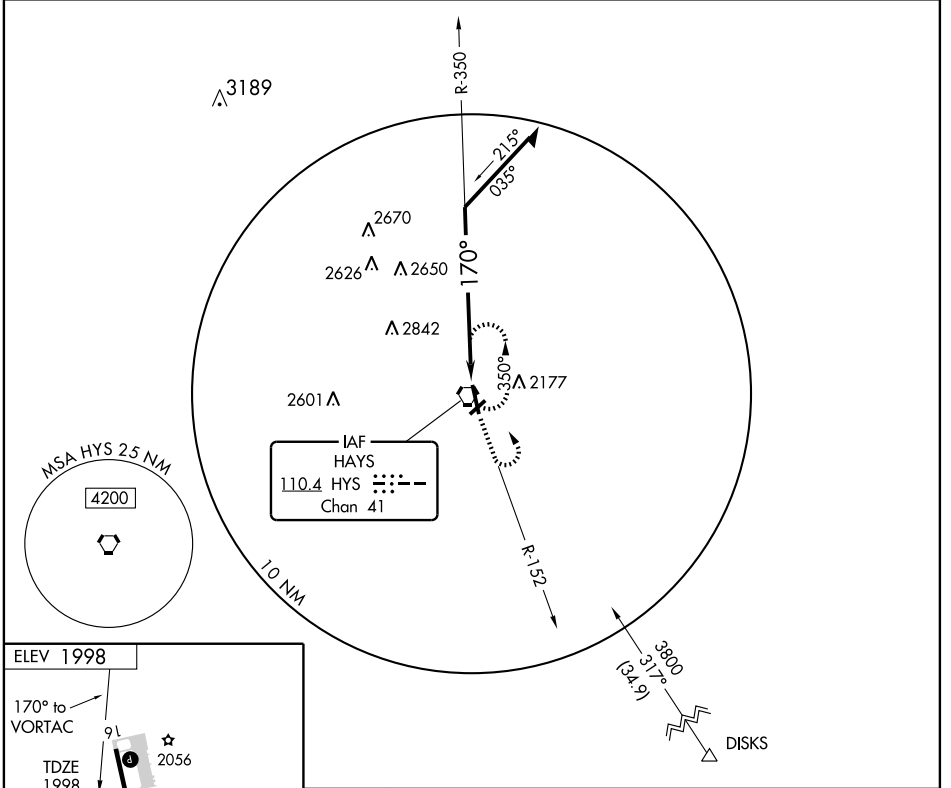
VORTAC HYS <b>110.4</b> Chan 41	APP CRS <b>170°</b>	Rwy Idg TDZE Apt Elev	<b>6500</b> <b>1998</b> <b>1998</b>
---------------------------------------	------------------------	-----------------------------	---

# VOR RWY 16

HAYS RGNL (HYS)

**▽**  
**▲** MISSED APPROACH: Climb to 3800 via HYS R-152 then left turn direct HYS VORTAC and hold.

AWOS-3 <b>125.525</b>	KANSAS CITY CENTER <b>124.4 322.4</b>	UNICOM <b>122.8</b> (CTAF) <b>0</b>
--------------------------	--	--



CATEGORY	A	B	C	D
S-16	2700-1	702 (800-1)	2700-2 702 (800-2)	2700-2½ 702 (800-2¼)
CIRCLING	2700-1	702 (800-1)	2700-2 702 (800-2)	2700-2½ 702 (800-2¼)

HAYS, KANSAS  
Amdt 3B 09127

38°51' N-99°16' W

# HAYS RGNL (HYS) VOR RWY 16

NC-2, 22 OCT 2009 to 19 NOV 2009

NC-2, 22 OCT 2009 to 19 NOV 2009