

| | | |
|--|------------------------|---|
| WAAS CH 53599 W36A | APP CRS 002° | Rwy Idg 5500 TDZE 922 Apt Elev 922 |
|--|------------------------|---|

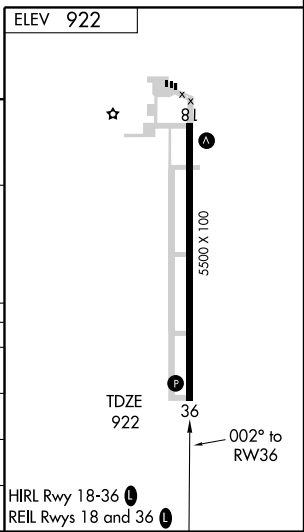
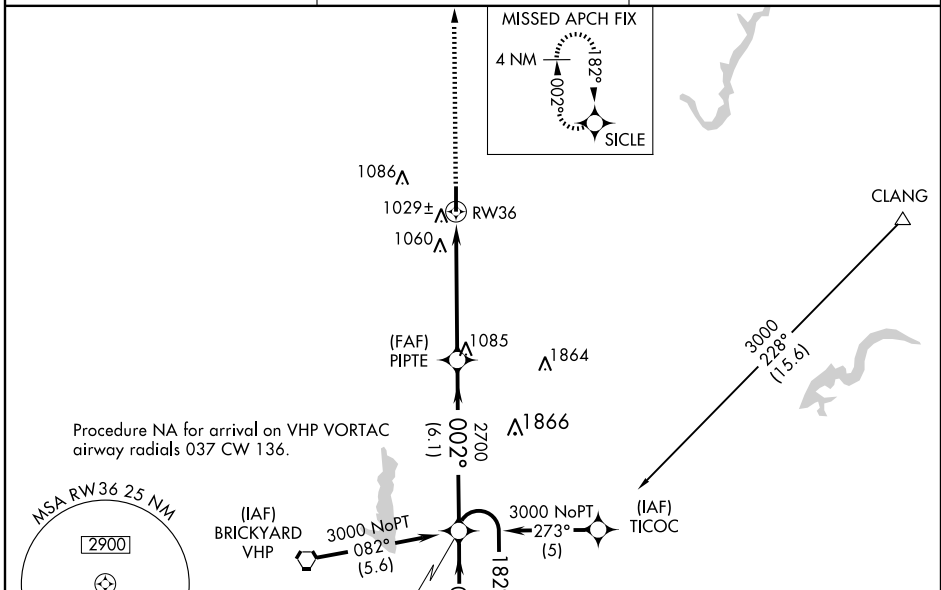
RNAV (GPS) RWY 36

INDIANAPOLIS EXECUTIVE (TYQ)

Baro-VNAV NA when using Indianapolis Intl altimeter setting. For uncompensated Baro-VNAV systems, LNAV/VNAV NA below -16°C (4°F) or above 47°C (116°F). DME/DME RNP-0.3 NA. Visibility reduction by helicopters NA. VDP NA with Indianapolis Intl altimeter setting. When local altimeter setting not received, use Indianapolis Intl altimeter setting and increase all DAs 61 feet and all visibilities ¼ mile; increase all MDAs 80 feet and LNAV Cats C/D visibilities ¼ mile.

MISSED APPROACH: Climb to 3000 direct SICLE and hold.

| | | |
|--------------------------|--|--------------------------------|
| AWOS-3 120.725 | INDIANAPOLIS APP CON 124.65 127.15 317.8 | UNICOM 123.05 (CTAF) |
|--------------------------|--|--------------------------------|



| | | | | |
|----------------------|--------|---|------------------|-------------|
| 4 NM Holding Pattern | YABUD | VGSI and RNAV glidepath not coincident. | 3000 | SICLE |
| 3000 | ← 182° | 002° → | ↑ | ✦ |
| GS 3.00° TCH 53 | 002° | PIPTE | * 1.1 NM to RW36 | * LNAV only |
| | 6.1 NM | 4.2 NM | 1.1 | |

| CATEGORY | A | B | C | D |
|--------------|-----------------------|-----------------------|-------------------------|-----------------------|
| LPV DA | 1209-1 | | 287 (300-1) | |
| LNAV/VNAV DA | 1299-1¼ | | 377 (400-1¼) | |
| LNAV MDA | 1320-1 | | 398 (400-1) | |
| | | | 1320-1¼ | |
| | | | 398 (400-1¼) | |
| CIRCLING | 1360-1 438 (500-1) | 1380-1 458 (500-1) | 1380-1½ 458 (500-1½) | 1480-2 558 (600-2) |

EC-2, 22 OCT 2009 to 19 NOV 2009

EC-2, 22 OCT 2009 to 19 NOV 2009