

| | |
|------------------------|------------------------|
| APP CRS 182° | Rwy Idg 5500 |
| | TDZE 922 |
| | Apt Elev 922 |

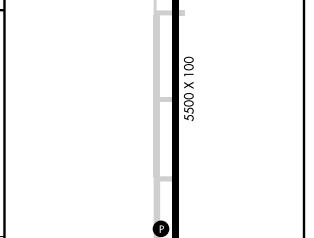
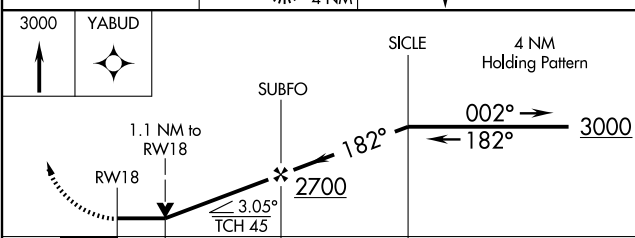
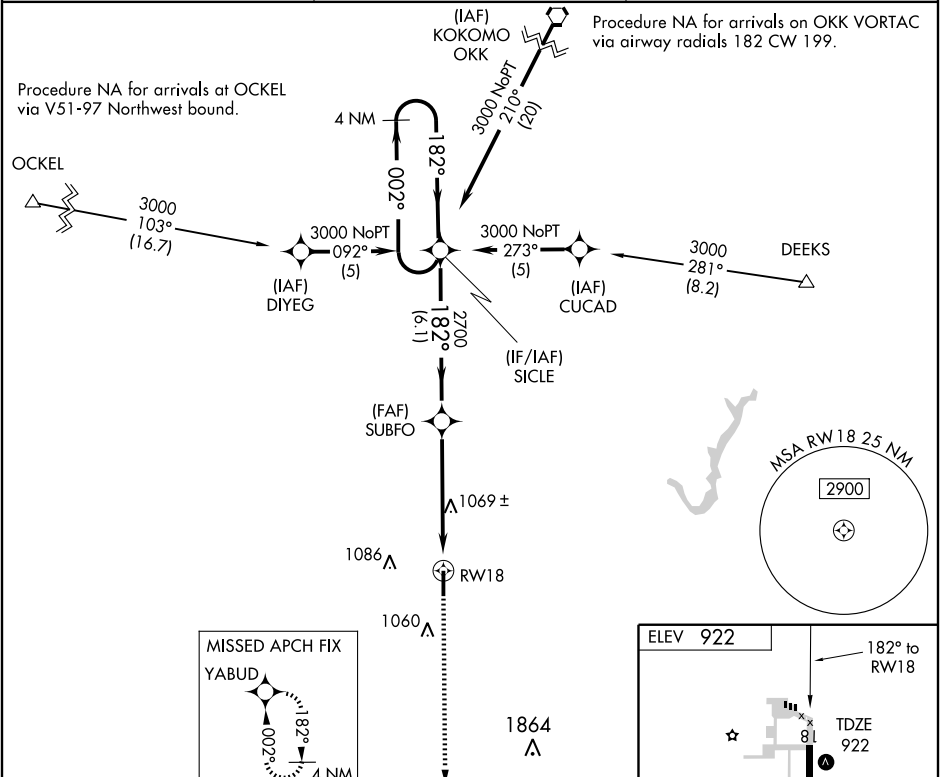
RNAV (GPS) RWY 18

INDIANAPOLIS EXECUTIVE (TYQ)

▽ DME/DME RNP-0.3 NA. Visibility reduction by helicopters NA.
▲ VDP NA when using Indianapolis Intl altimeter setting.
▲ NA When local altimeter setting not received, use Indianapolis Intl altimeter setting and increase all MDAs 80 feet and LNAV Cats C/D visibilities ¼ mile.

MISSED APPROACH: Climb to 3000 direct YABUD and hold.

| | | |
|--------------------------|--|--------------------------------|
| AWOS-3 120.725 | INDIANAPOLIS APP CON 124.65 127.15 317.8 | UNICOM 123.05 (CTAF) |
|--------------------------|--|--------------------------------|



| | | | | |
|----------|-----------------------|-----------------------|-------------------------|-----------------------|
| CATEGORY | A | B | C | D |
| LNAV MDA | 1320-1 | 398 (400-1) | 1320-1½ | 398 (400-1½) |
| CIRCLING | 1360-1 438 (500-1) | 1380-1 458 (500-1) | 1380-1½ 458 (500-1½) | 1480-2 558 (600-2) |

HIRL Rwy 18-36
 REIL Rwy 18 and 36

EC-2, 22 OCT 2009 to 19 NOV 2009

EC-2, 22 OCT 2009 to 19 NOV 2009