

BAY CITY, MICHIGAN

AL-5437 (FAA)

VOR/DME MBS <b>112.9</b> Chan <b>76</b>	APP CRS <b>087°</b>	Rwy Idg TDZE Apt Elev	<b>N/A</b> <b>N/A</b> <b>586</b>
---	------------------------	-----------------------------	--

**VOR-A**  
BAY CITY/JAMES CLEMENTS MUNI (3CM)

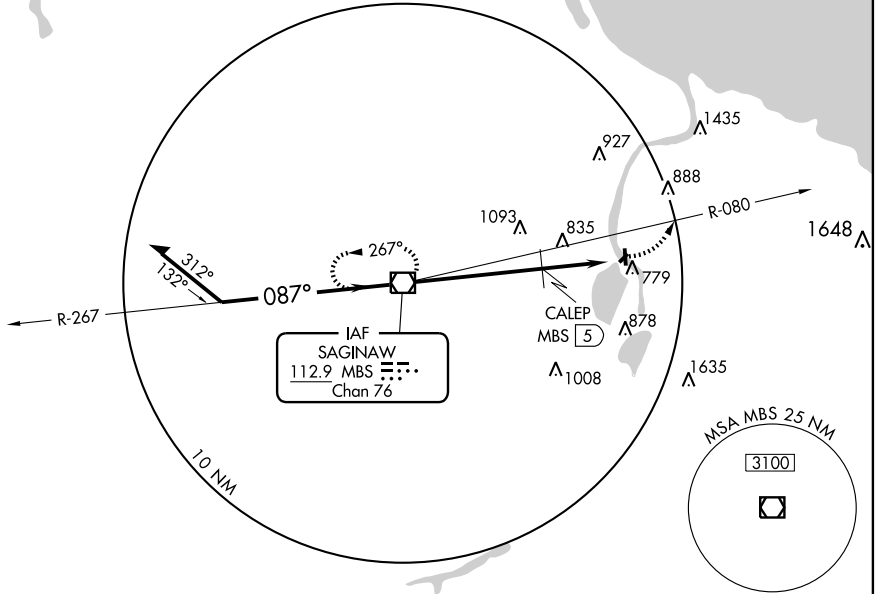
BAY CITY/JAMES CLEMENTS MUNI (3CM)

- ▼ Use Saginaw altimeter setting.
- ▲ NA Circling not authorized southeast of Rwy 23 and 36.

MISSED APPROACH: Climbing left turn to 2400 via MBS R-080 outbound then climbing left turn to 3000 direct MBS VOR/DME and hold.

SAGINAW APP CON ★  
**120.95 235.625**

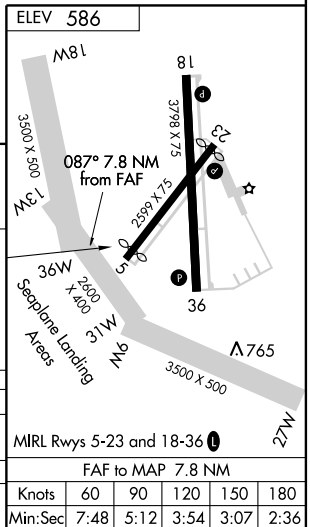
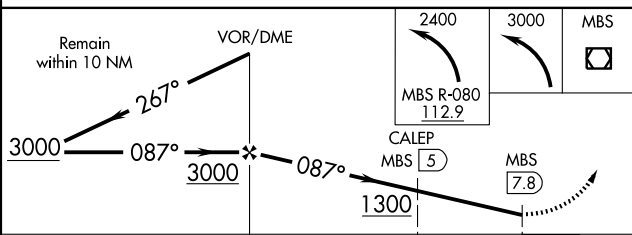
UNICOM  
**122.8** (CTAF) **0**



EC-1, 22 OCT 2009 to 19 NOV 2009

EC-1, 22 OCT 2009 to 19 NOV 2009

CAUTION: Tall vessels may be in the approach areas to Rwy 5 and 36.



CATEGORY	A	B	C	D
CIRCLING	1300-1 714 (800-1)	1300-1 714 (800-1)	1300-2 714 (800-2)	NA
DME MINIMUMS				
CIRCLING	1120-1 534 (600-1)	1180-1 594 (600-1)	1180-1½ 594 (600-1½)	NA

FAF to MAP 7.8 NM					
Knots	60	90	120	150	180
Min:Sec	7:48	5:12	3:54	3:07	2:36

BAY CITY, MICHIGAN  
Amdt 12 09295

BAY CITY/JAMES CLEMENTS MUNI (3CM)

43°33'N - 83°54'W

**VOR-A**