

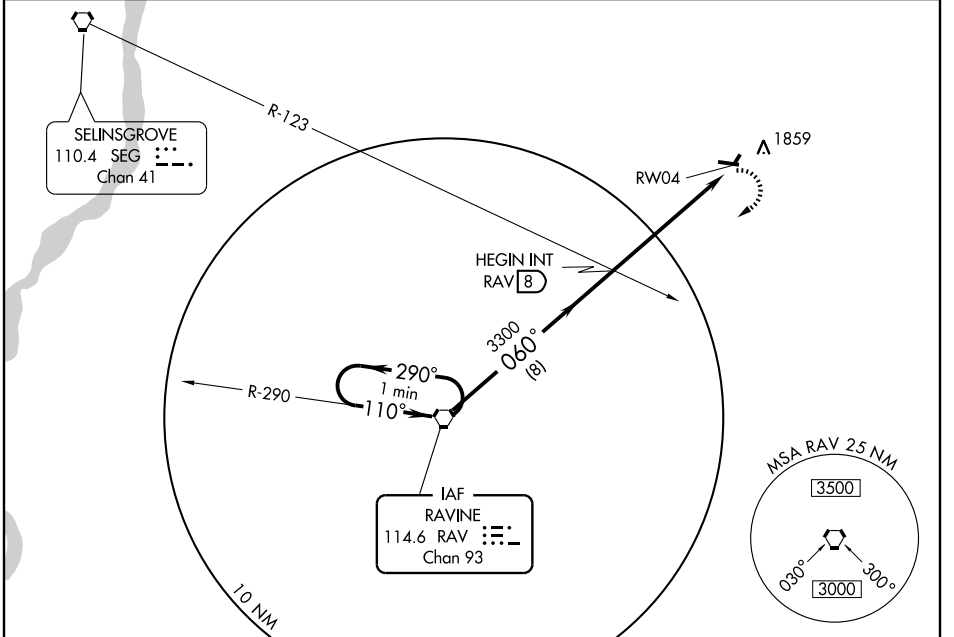
VORTAC RAV 114.6 Chan 93	APP CRS 060°	Rwy Idg 2270 TDZE 1716 Apt Elev 1734
--	------------------------	---

VOR or GPS RWY 4

POTTSVILLE / SCHUYLKILL COUNTY (JOE ZERBEY) (Z:R)

<p>Straight in minimums not authorized at night.</p>	<p>MISSED APPROACH: Climbing right turn to 4000 direct RAV VORTAC and hold.</p>
--	---

AWOS-3 127.57	HARRISBURG APP CON 118.25 269.45	UNICOM 122.8 (CTAF)
-------------------------	--	-------------------------------

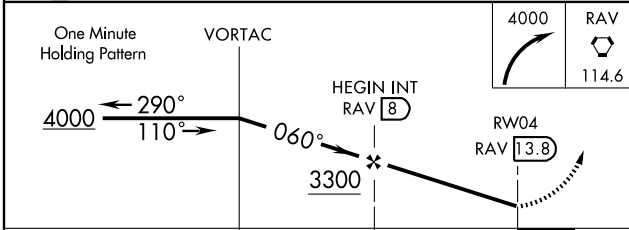


NoPT for arrivals on RAV VORTAC airway radials 290 clockwise 329.

ELEV 1734	Rwy 22 Idg 2070'
-----------	------------------

Diagram details: FAF 1800±; TDZE 1716; Climb gradient 0.5% UP; Distance 4594 X 75; Altitude 4000; RAV 114.6; RWY 4 with TDZE 1716; REIL Rws 11 and 29; MIRL Rwy 11-29; FAF to MAP 5.8 NM.

Knots	60	90	120	150	180
	Min:Sec	5:48	3:52	2:54	2:19



CATEGORY	A	B	C	D
S-4	2300-1	584 (600-1)	2300-1½ 584 (600-1½)	2300-1¾ 584 (600-1¾)
CIRCLING	2340-1	606 (700-1)	2340-1¾ 606 (700-1¾)	2340-2 606 (700-2)

VOR or GPS RWY 4

NE-4, 22 OCT 2009 to 19 NOV 2009

NE-4, 22 OCT 2009 to 19 NOV 2009