

RNAV (GPS) RWY 11

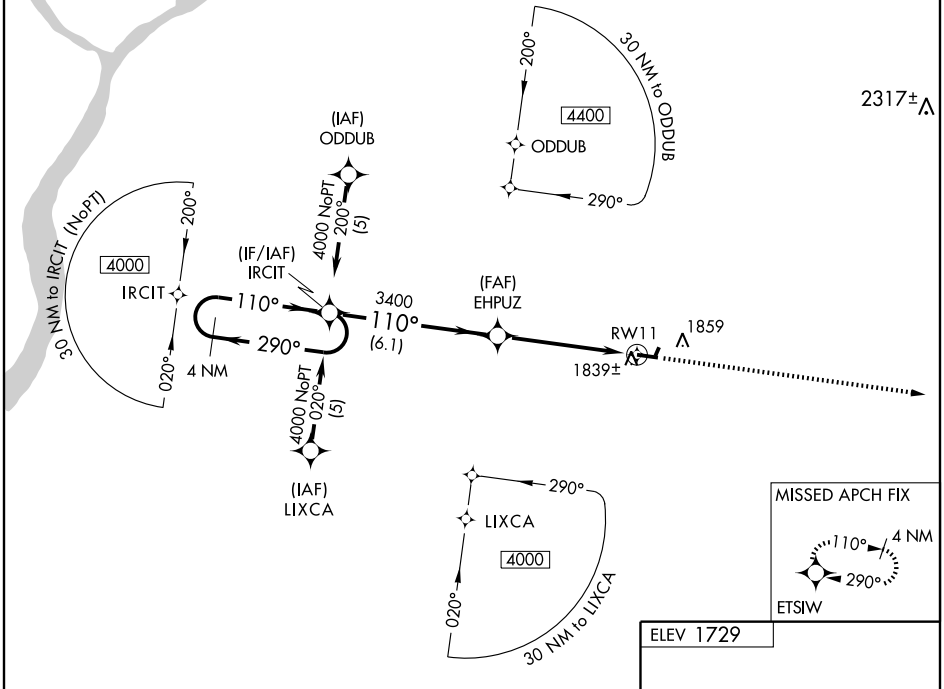
POTTSVILLE / SCHUYLKILL COUNTY (JOE ZERBEY) (Z.E.R.)

WAAS CH 61214 W11A	APP CRS 110°	Rwy Idg TDZE Apt Elev	4594 1729 1729
--	------------------------	-----------------------------	---

NA DME/DME RNP-0.3 NA. Baro-VNAV NA. When local altimeter setting not received, use Selinsgrove altimeter setting and increase all DA 261 feet and all MDA 280 feet, increase LPV and LNAV/VNAV all Cats visibility 1 mile, LNAV Cat A ¼ mile, Cat B ½ mile, Cat C 1 mile, Cat D ¾ mile and circling Cat A/B visibility ¼ mile, Cat C ¾ mile, Cat D ½ mile. VDP NA when using Selinsgrove altimeter setting.

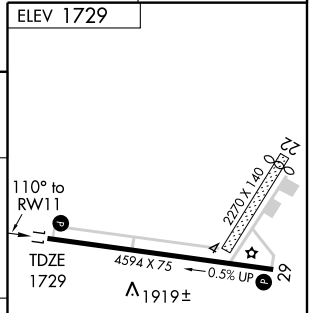
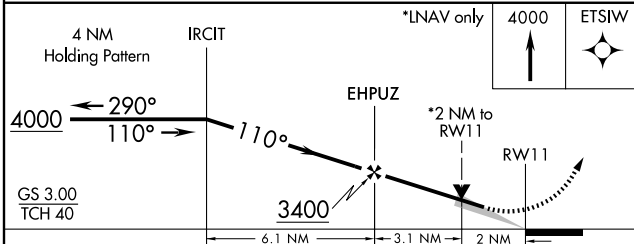
MISSED APPROACH: Climb to 4000 direct ETSIW and hold.

AWOS-3 127.57	HARRISBURG APP CON 118.25 269.45	UNICOM 122.8 (CTAF) 0
-------------------------	--	--



NE-4, 22 OCT 2009 to 19 NOV 2009

NE-4, 22 OCT 2009 to 19 NOV 2009



CATEGORY	A	B	C	D
LPV DA	2179-1½		450 (500-1½)	
LNAV/ VNAV DA	2309-2		580 (600-2)	
LNAV MDA	2420-1	691 (700-1)	2420-2	2420-2¼
	751 (800-1)	751 (800-1¼)	691 (700-2)	691 (700-2¼)
CIRCLING	2480-1	2480-1¼	2480-2¼	2480-2½
	751 (800-1)	751 (800-1¼)	751 (800-2¼)	751 (800-2½)

ELEV 1729

TDZE 1729

REIL Rwy 11 and 29 **0**

MRL Rwy 11-29 **0**

RNAV (GPS) RWY 11