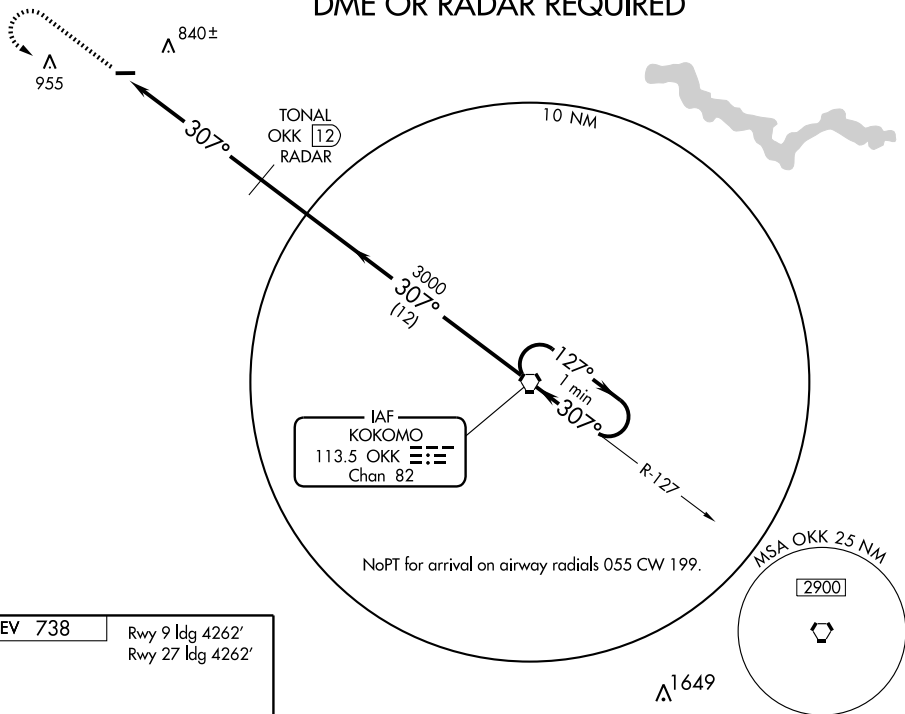


VORTAC OKK 113.5 Chan 82	APP CRS 307°	Rwy ldg TDZE Apt Elev	N/A N/A 738
--	------------------------	-----------------------------	--

<p>▼ Obtain local altimeter setting on CTAF; when not received, use Lafayette altimeter setting.</p>	<p>MISSED APPROACH: Climb to 3000, then left turn via OKK R-307 to OKK VORTAC and hold.</p>
--	---

<p>GRISSOM APP CON ★ 121.05 379.3</p>	<p>UNICOM 122.8 (CTAF) 0</p>
--	---

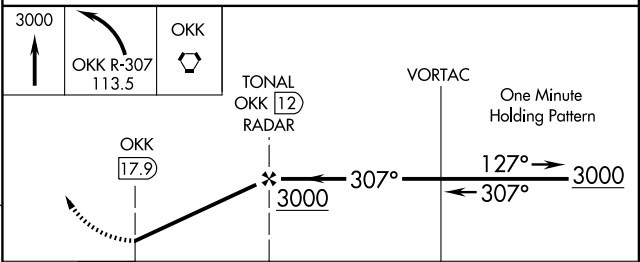
DME OR RADAR REQUIRED



ELEV 738 Rwy 9 ldg 4262'
Rwy 27 ldg 4262'



307° 5.9 NM from FAF



MIRL Rwy 9-27 0	FAF to MAP 5.9 NM				
Knots	60	90	120	150	180
Min:Sec	5:54	3:56	2:57	2:22	1:58
CATEGORY	A	B	C	D	
CIRCLING	1140-1 402 (500-1)	1200-1 426 (500-1)	1200-1½ 462 (500-1½)	1300-2 562 (600-2)	
LAFAYETTE ALTIMETER SETTING MINIMUMS					
CIRCLING	1240-1 502 (600-1)		1240-1½ 502 (600-1½)		1400-2 662 (700-2)

EC-2, 22 OCT 2009 to 19 NOV 2009

EC-2, 22 OCT 2009 to 19 NOV 2009