

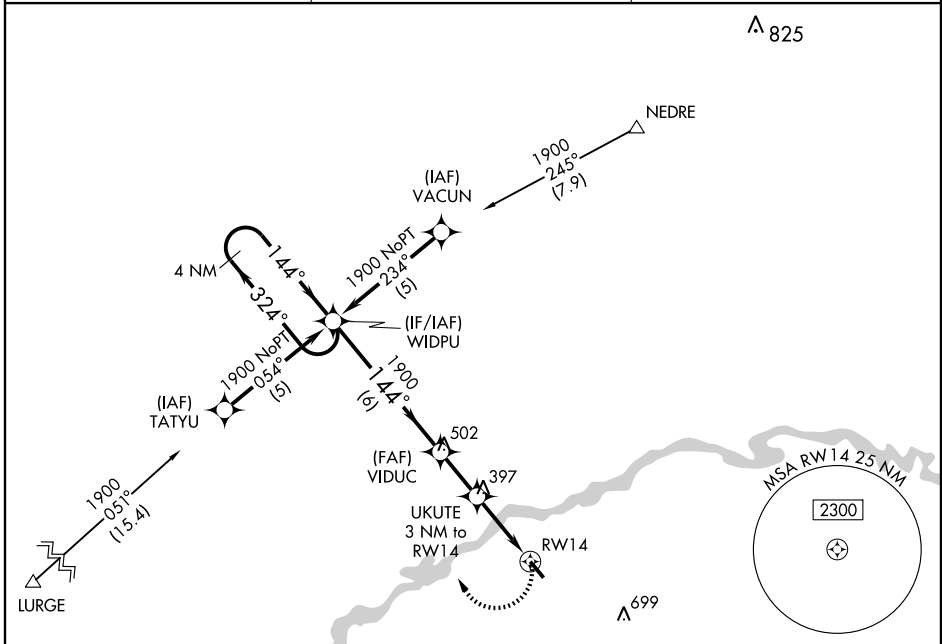
# RNAV (GPS) RWY 14

HAZLEHURST (AZE)

APP CRS	Rwy Idg	<b>4508</b>
<b>144°</b>	TDZE	<b>255</b>
	Apt Elev	<b>255</b>

<p><b>▼</b> DME/DME RNP-0.3 NA. Visibility reduction by helicopters NA. Use Vidalia altimeter setting, when not received, use Alma altimeter setting.</p> <p><b>▲</b> NA</p>	<p>MISSED APPROACH: Climbing right turn to 1900 direct WIDPU and hold.</p>
--	--

<p>VIDALIA AWOS-3 <b>119.925</b></p>	<p>JACKSONVILLE CENTER <b>132.3 290.4</b></p>	<p>UNICOM <b>122.8</b> (CTAF)</p>
--	---	---------------------------------------



SE-4, 22 OCT 2009 to 19 NOV 2009

SE-4, 22 OCT 2009 to 19 NOV 2009

4 NM Holding Pattern		WIDPU		VIDUC		UKUTE 3 NM to RW14		1900 WIDPU	
1900 ← 324°		144° →		1900		1220		RW14	
VGSI and descent angles not coincident.		6 NM		2.1 NM		3 NM			
CATEGORY	A	B	C	D					
RNAV MDA	680-1	425 (500-1)	680-1¼	425 (500-1¼)					
CIRCLING	740-1	485 (500-1)	740-1½	485 (500-1½)	820-2	REIL Rwy 14 and 32 MIRL Rwy 14-32			

