

LA PORTE, TEXAS

AL-5433 (FAA)

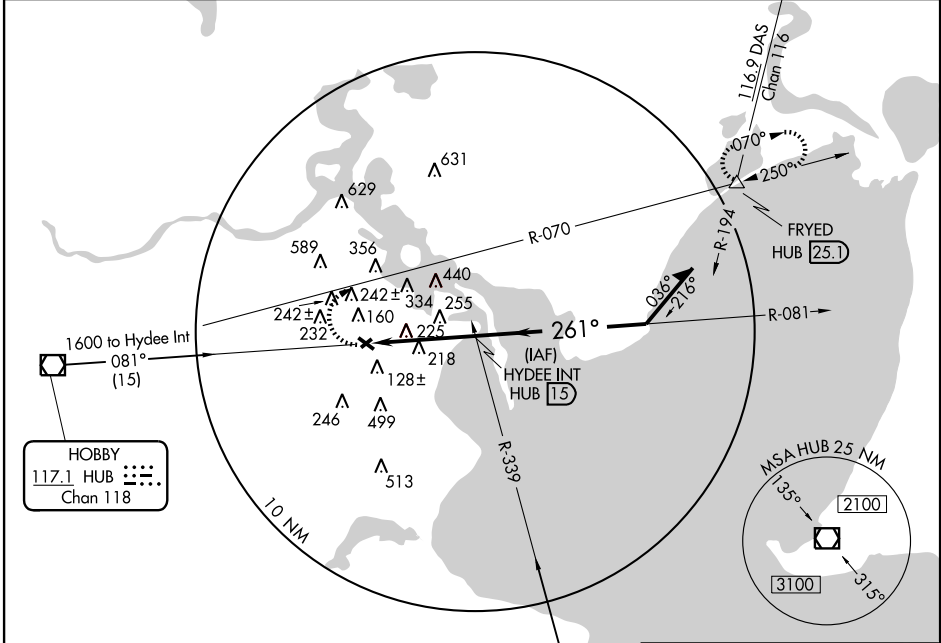
VOR-A

LA PORTE MUNI (T41)

VOR/DME HUB 117.1 Chan 118	APP CRS 261°	Rwy Idg TDZE Apt Elev	N/A N/A 25
--	------------------------	-----------------------------	---------------------------------------

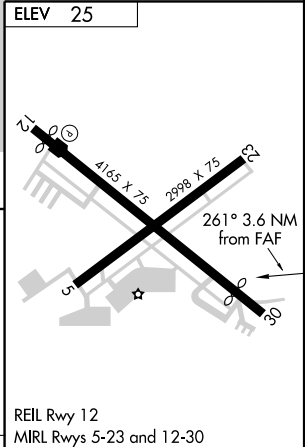
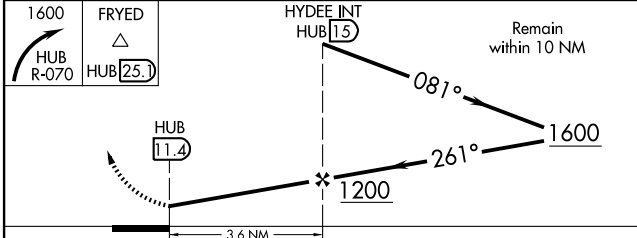
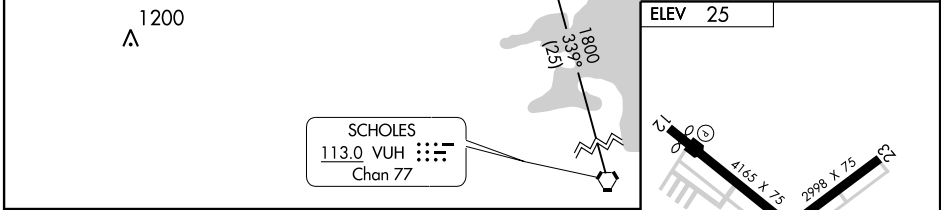
▼ Use Ellington Field altimeter setting.
▲ NA
 MISSED APPROACH: Climbing right turn to 1600 via HUB R-070 to FRYED Int and hold.

HOUSTON APP CON 134.45 284.0	CLNC DEL 125.6	UNICOM 122.7 (CTAF)
--	--------------------------	-------------------------------



SC-5, 22 OCT 2009 to 19 NOV 2009

SC-5, 22 OCT 2009 to 19 NOV 2009



CATEGORY	A	B	C	D	FAF to MAP 3.6 NM					
CIRCLING	660-1	635 (700-1)	660-1¼ 635 (700-1¼)	NA	Knots	60	90	120	150	180
					Min:Sec	3:36	2:24	1:48	1:26	1:12

LA PORTE, TEXAS
Orig 09071

29°40'N-95°04'W

LA PORTE MUNI (T41)
VOR-A