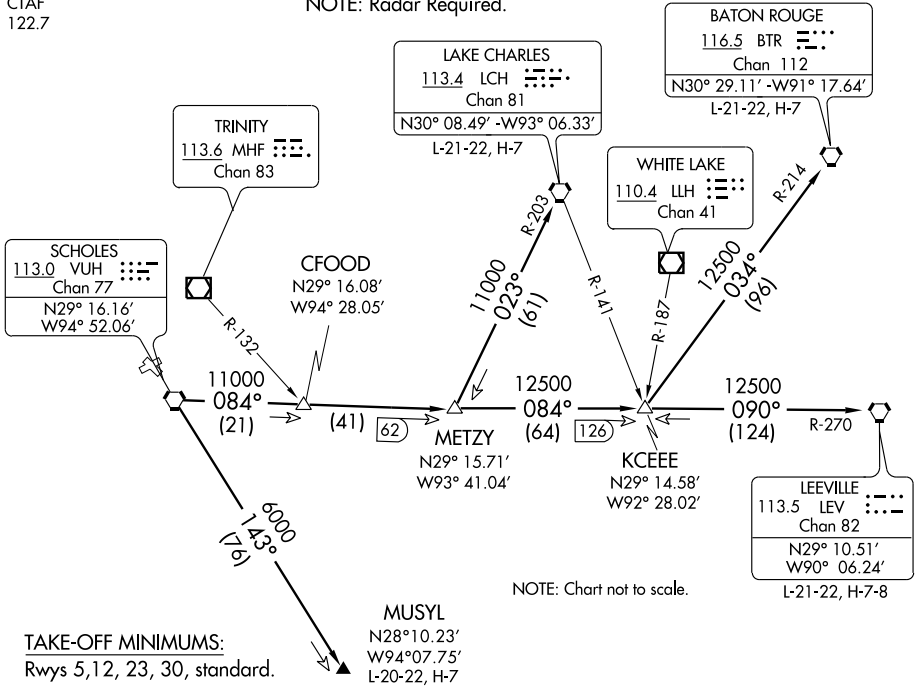


CLNC DEL
125.6
HOUSTON DEP CON
134.45 284.0
CTAF
122.7

NOTE: LCH, BTR, and LEV transitions are ATC assigned only, do not file.
NOTE: For LCH, BTR, LEV transitions, this procedure requires over water flight not to exceed 35 miles from nearest shoreline.
NOTE: Radar Required.



TAKE-OFF MINIMUMS:
Rwys 5, 12, 23, 30, standard.

TAKE-OFF OBSTACLES:
Rwy 5, Stack 2.1 NM from DER, 3297' left of centerline, 330' AGL/334' MSL.
Rwy 12, Pole 131' from DER, 261' right of centerline, 14' AGL/38' MSL. Stack 2.2 NM from DER, 1.6 NM right of centerline, 479' AGL/499' MSL.

DEPARTURE ROUTE DESCRIPTION

When entering controlled airspace, fly assigned heading for vectors to VUH VORTAC, maintain 4000', expect filed altitude 10 minutes after departure.

- BATON ROUGE TRANSITION (VUH3.BTR): From over VUH VORTAC via VUH R-084 to KCEEE INT, then via BTR R-214 to BTR VORTAC.
- LAKE CHARLES TRANSITION (VUH3.LCH): From over VUH VORTAC via VUH R-084 to METZY INT, then via LCH R-203 to LCH VORTAC.
- LEEVILLE TRANSITION (VUH3.LEV): From over VUH VORTAC via VUH R-084 to KCEEE INT, then via LEV R-270 to LEV VORTAC.
- MUSYL TRANSITION (VUH3.MUSYL): From over VUH VORTAC via VUH R-143 to MUSYL.

SC-5, 22 OCT 2009 to 19 NOV 2009

SC-5, 22 OCT 2009 to 19 NOV 2009