

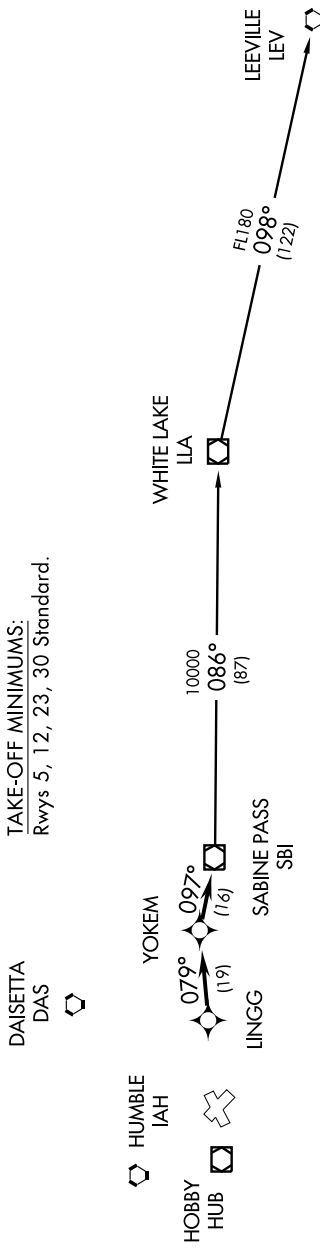
SABINE PASS ONE DEPARTURE (RNAV)

SC-5, 22 OCT 2009 to 19 NOV 2009

CINC DEL
125.6
HOUSTON DEP CON
134.45 284.0
CTAF
122.7

Note: RADAR Required.
Note: RNAV 1.
Note: DME/DME/IRU or GPS Required.
Note: For non-GPS equipped aircraft,
BPT and LCH must be operational.

TAKE-OFF MINIMUMS:
Rwys 5, 12, 23, 30 Standard.



TAKE-OFF OBSTACLES:

Rwy 5,
Stack 2.1 NM from DER, 3297' left of centerline, 330' AGL/334' MSL.
Rwy 12,
Pole 131' from DER, 261' right of centerline, 14' AGL/ 38' MSL.
Stack 2.2 NM from DER, 1.6 NM right of centerline, 479' AGL/499' MSL.

DEPARTURE ROUTE DESCRIPTION

When entering controlled airspace, fly assigned heading for vectors to LINGG, maintain 4000, then via depicted route to SBI VOR/DME, thence. . . .
... via (transition). Expect clearance to filed altitude/flight level 10 minutes after departure.

LEEVILLE TRANSITION: (SBI11.LEV)
WHITE LAKE TRANSITION: (SBI11.LLA)

NOTE: Chart not to scale.