

LA PORTE, TEXAS

AL-5433 (FAA)

# RNAV (GPS) RWY 30

LA PORTE MUNI (T41)

APP CRS <b>301°</b>	Rwy Idg <b>3763</b>
	TDZE <b>25</b>
	Apt Elev <b>25</b>

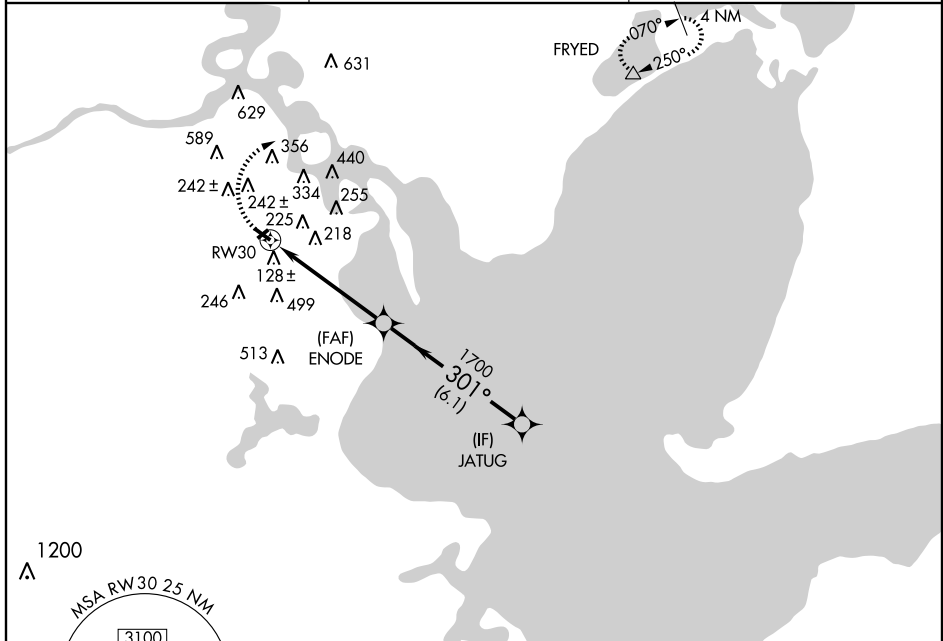
**▽** Use Ellington Field altimeter setting.  
**△ NA** DME/DME RNP-0.3 NA.

MISSED APPROACH: Climbing right turn to 2000 direct FRYED and hold.

HOUSTON APP CON  
**134.45 284.0**

CLNC DEL  
**125.6**

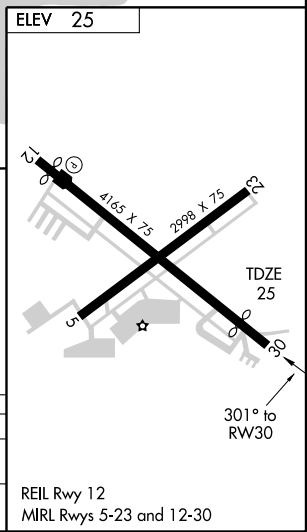
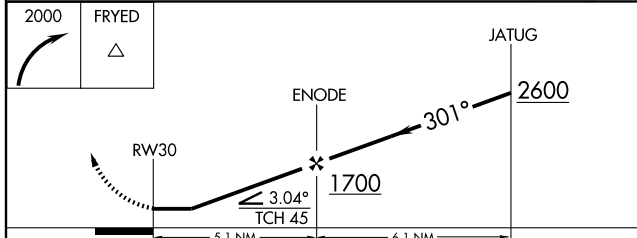
UNICOM  
**122.7 (CTAF)**



SC-5, 22 OCT 2009 to 19 NOV 2009

SC-5, 22 OCT 2009 to 19 NOV 2009

2000	FRYED



CATEGORY	A	B	C	D
LNNAV MDA	520-1	495 (500-1)	520-1½ 495 (500-1½)	NA
CIRCLING	600-1 575 (600-1)	620-1 595 (600-1)	620-1½ 595 (600-1½)	NA

LA PORTE, TEXAS  
Amdt 1 09071

29°40'N-95°04'W

# RNAV (GPS) RWY 30

LA PORTE MUNI (T41)